

MODEL NUMBER	HHI150-12-447T-F2		
HORSEPOWER	150		
RPM / POLES	1200 / 6		
VOLTAGE / PHASE	460 V / 3		
FRAME	447T		
ENCLOSURE / DEGREE OF PROTECTION	TEFC / IP55		
FREQUENCY	60 HZ		
FULL LOAD SPEED	1185 RPM		
SERVICE FACTOR	1.15 SF at 40° C / 1.0 SF at 65° C		
INSULATION CLASS	F Class N Varnish		
FULL LOAD AMPS; 460	169.5 A		
LOCKED ROTOR CURRENT (% Full Load)	680 %		
NEMA CODE LETTER	G		
EFFICIENCY / POWER FACTOR	<u>LOAD</u>	<u>EFF.</u>	<u>P.F.</u>
	100 %	95.8 %	85.0 %
	75 %	96.0 %	81.4 %
	50 %	95.7 %	72.6 %
DUTY CYCLE	S1 / Continuous		
TORQUE	<u>FULL LOAD</u>	<u>LRT</u>	<u>BDT</u>
	654.0 lb.ft.	140 %	220 %
NEMA DESIGN	B		
MOMENT OF INERTIA	<u>LOAD (Max.)</u>	<u>MOTOR</u>	
	4864.156 lb.ft. <sup>2</sup>	106.310 lb.ft. <sup>2</sup>	
SOUND PRESSURE LEVEL ( No Load 1 M From Motor)	78 dB(A)		
NUMBER OF STARTS (Hot / Cold)	2 Hot / 3 Cold		
MAX. AMBIENT TEMPERATURE	40° C at 1.15 SF / 65° C at 1.0 SF		
MAX. ELEVATION	3300 Ft. Above Sea Level		
TEMPERATURE RISE (At Full Load)	80° C		
DRIVE-END BEARING	NU318		
OPPOSITE DRIVE-END BEARING	6316C3		
GREASE TYPE	Mobil Polyrex EM		
MOUNTING	F2 (F1 Suitable), W6, W8, B3, V5, V6		
ROTATION	Bi-Directional		
APPROXIMATE WEIGHT	1860 lbs.		
AREA CLASSIFICATION	Class I, Division 2, Groups A, B, C, D		
INVERTER RATING	10:1 CT / 20:1 VT - Meets NEMA MG1 Part 31		
SPECIFICATION - In Accordance With	NEMA, CSA		



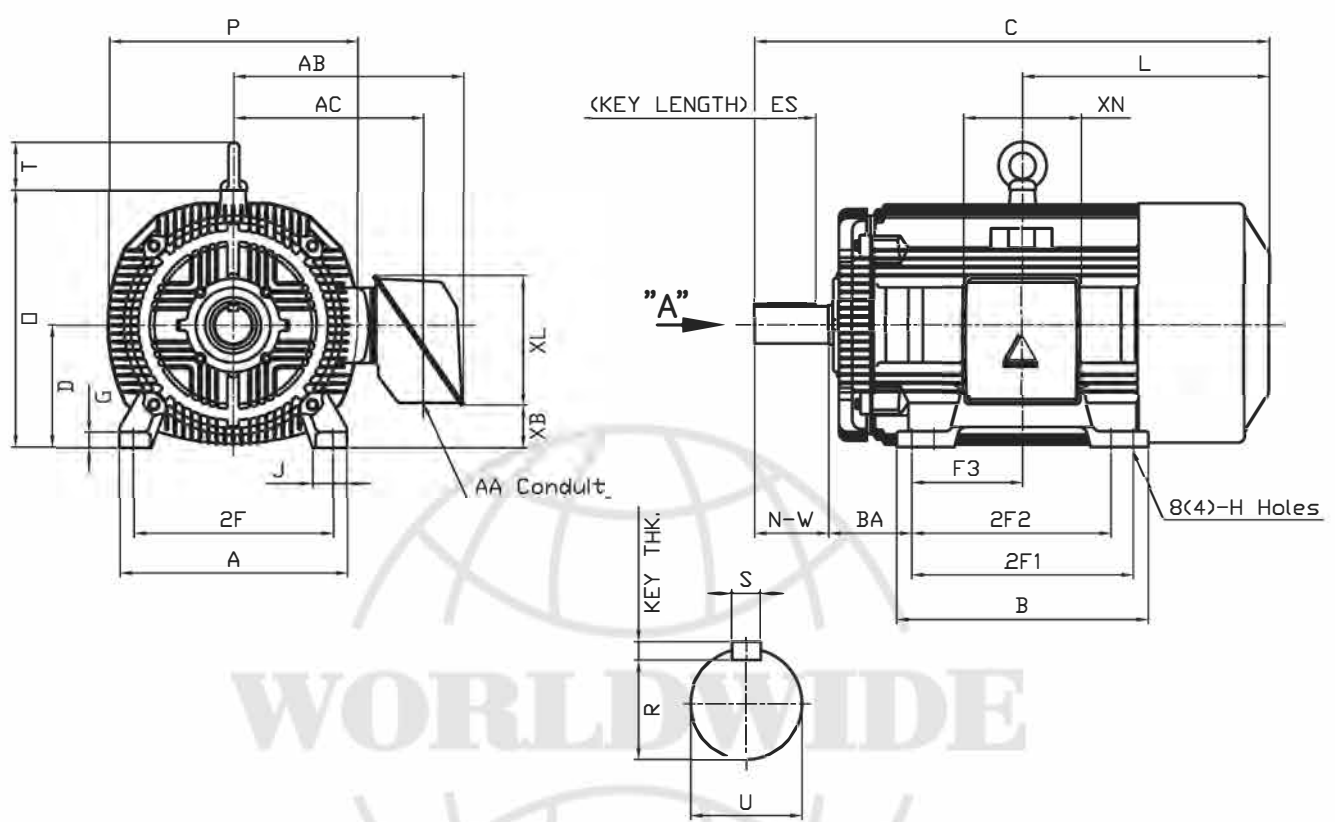
CC 038A



본 도면은 현대중공업(주) 재산이므로  
허가없이 복사할 수 없음 (취급유의)

THIS DRAWING IS PROPRIETARY TO HEECO. NO PART OF THIS DRAWING  
MAYBE REPRODUCED WITHOUT THE PERMISSION OF HHI.

<b>HYUNDAI</b> HEAVY INDUSTRIES CO., LTD.		<h1>TEFC</h1> <h2>THREE PHASE INDUCTION MOTOR</h2>		<b>TYPE</b> LP, JP Cast iron frame
FRAME SIZE	OUTPUT(HP)	POLES	Hz	TIME RATING
447T			60	CONT



**DIMENSIONS**

**VIEW "A"**

M O U N T I N G									C O N D U I T B O X						APPROX. WGT.(LB)
A	B	2E	2F1	2F2	F3	G	J	H	AA	AB	AC	XB	XL	XN	
20.51	22.72	18.00	20.00	(17.99)	10.00	1.42	3.07	0.81	3.00	21.26	18.03	3.83	11.65	10.63	1860

O V E R A L L								S H A F T			KEY	BEARING		
BA	C	D	L	O	P	T	U	N-W	KEYWAY			THK.	DRIVE END	OPP. DRIVE END
									R	ES	S			
7.50	48.71	11.00	22.71	23.19	22.40	4.33	3.375	8.50	2.880	6.93	0.875	0.875	6318C3 or NU318	6316C3

**NOTE**

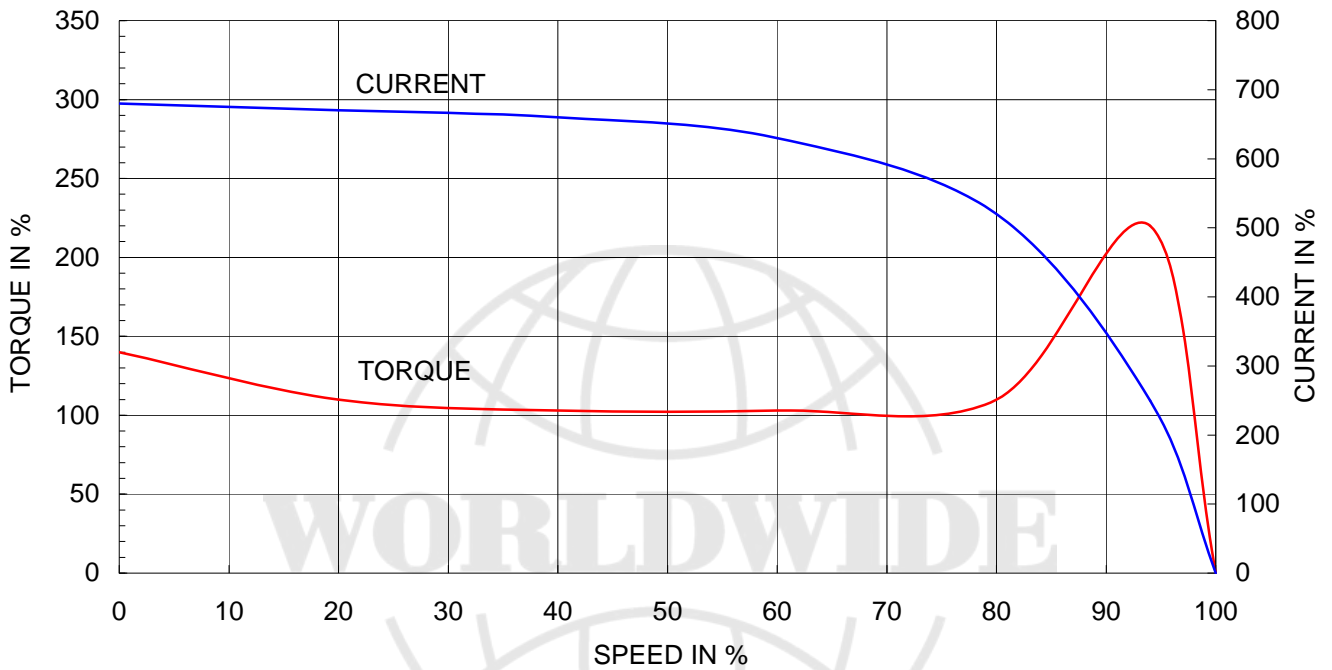
1. Dimension "D" tolerance : +0.00inch - 0.03inch (143T-365T) ; +0.000inch - 0.06inch (404T-449T)
2. Dimension "U" tolerance : +0.000inch - 0.005inch (143T-215T), +0.000inch - 0.001inch (254T-449T)
3. Dimension "R" tolerance : +0.000inch - 0.015inch
- △ 4. 2F2 foot provision allows F1 to F2 conversion

Q'TY	DESCRIPTION	MATERIAL	DIMENSION	WEIGHT	PART NO.	REMARK	NO.
APPD BY	K.J. Kang	UNIT	INCH	SUBJECT	447T	CAD PROJ FILE	
Q.P CHK		SCALE	N/S	TITLE	OUTLINE		
CHKD BY		PROJEC'N	3 각법(3rd Angle)	REF. NO	A1119AA	Sheet No.	of
DSND BY	N.D.Lee	DATE	2011.01.12	DWG NO	350A1119AA	Revision No.	0

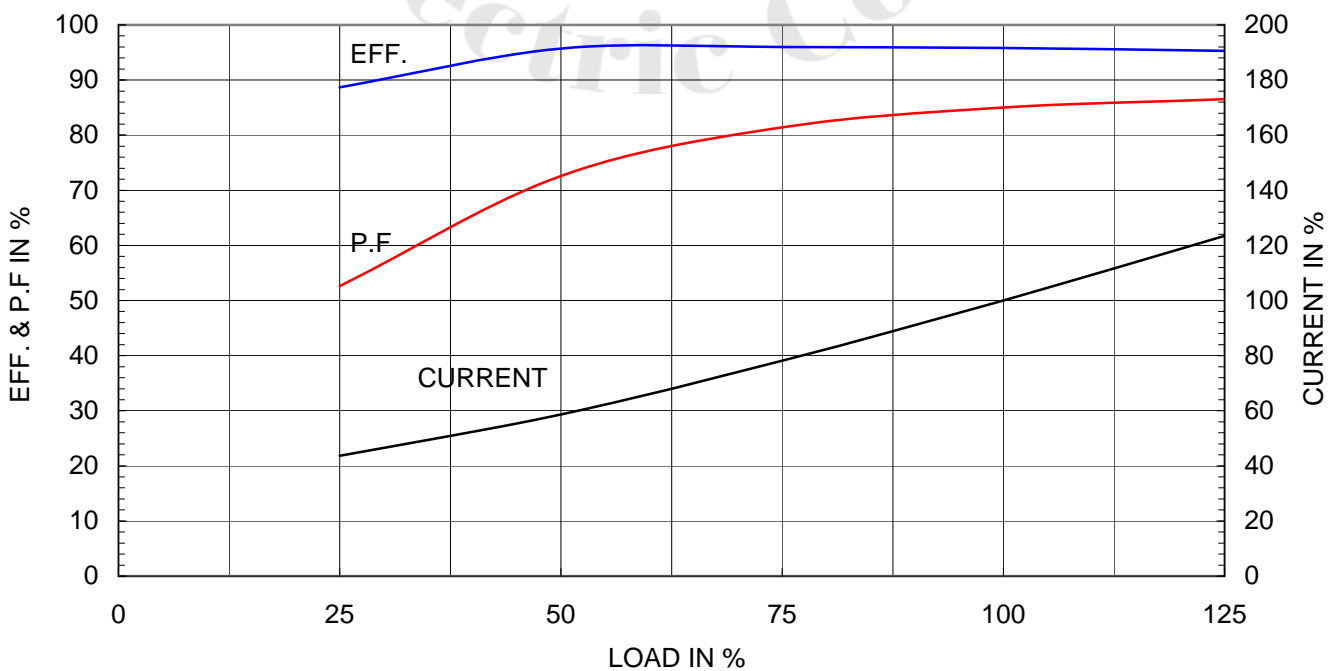
Type	: PLP
Full Load Torque	: 654.0 lb.ft
Motor moment of Inertia (J)	: 106.310 lb.ft <sup>2</sup>
Load moment of Inertia (J)	: 4864.156 lb.ft <sup>2</sup>

110 kW	150 HP	60 Hz
6 P	Rated Speed	: 1185 RPM
Rated Voltage	575V	460V
Full Load Current	135.6A	169.5A

SPEED VS TORQUE & CURRENT CURVE



OUTPUT VS EFF., P.F & CURRENT CURVE



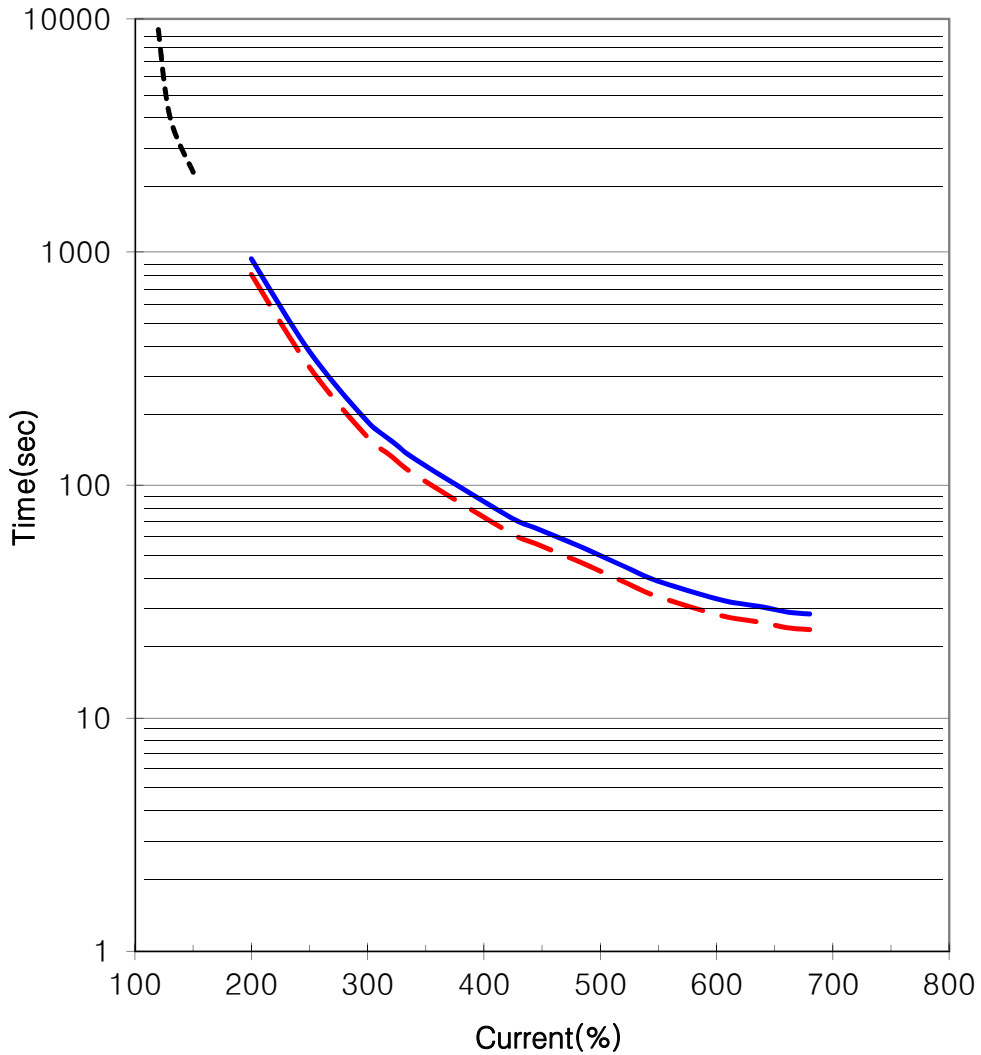


### THERMAL LIMIT & TIME CURRENT CURVE

CURVE NO.

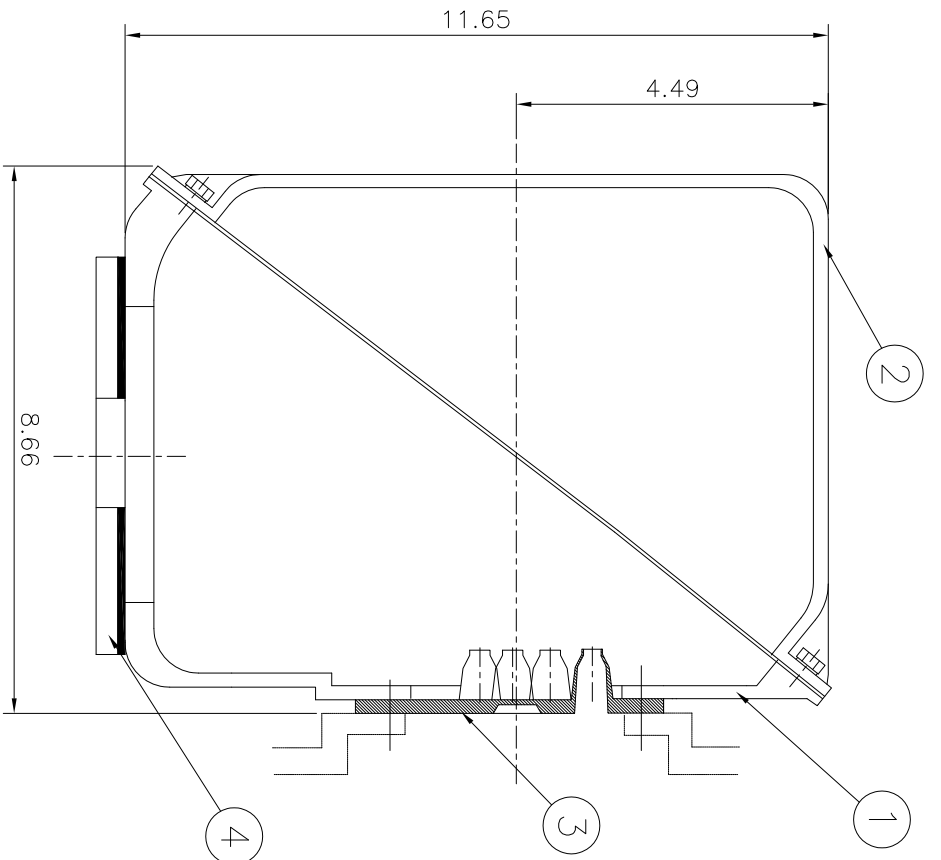
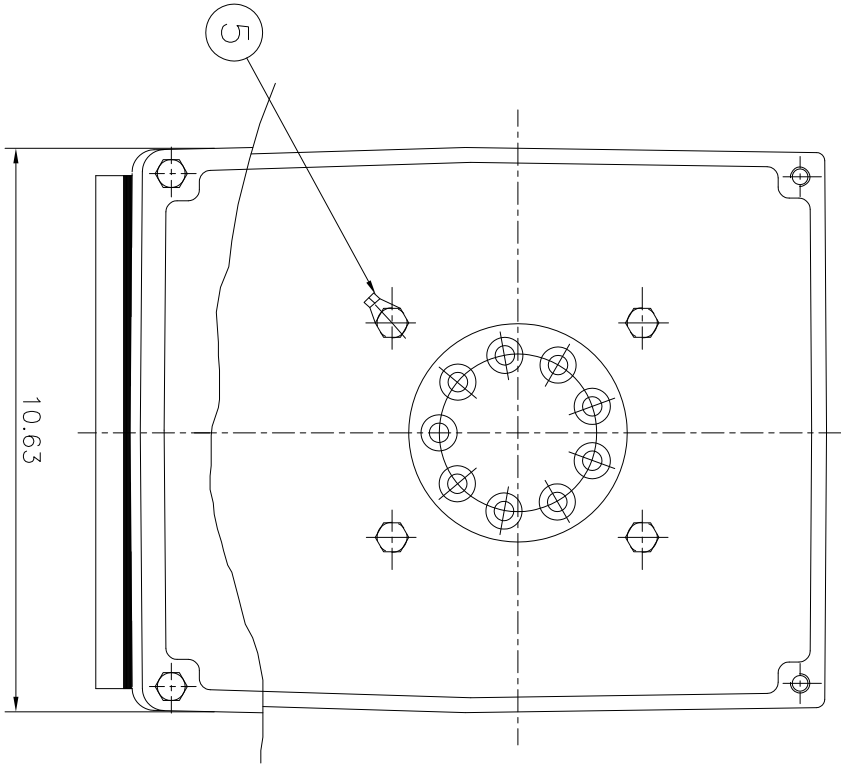
T-PLP150-12-447T-F2

Type :	PLP150-12-447T	150	HP	6	P	60	Hz
FULL LOAD TORQUE :	654.0 lb.ft	RATED SPEED :		1185 rpm			
J OF LOAD :	- lb.ft <sup>2</sup>	VOLTAGE		460 V	575 V		
J OF MOTOR :	106.3 lb.ft <sup>2</sup>	RATED CURRENT		169.5A	135.6A		



— THERMAL LIMIT CURVE AT COLD CONDITION  
- - THERMAL LIMIT CURVE AT HOT CONDITION

STARTING TIME	SAFE STALL TIME
- at rated voltage starting	24 sec. at Hot condition
- at 80% of rated voltage starting	28 sec. at Cold condition



▽	SOS
▽▽	12.5S
▽▽▽	3.2S
▽▽▽▽	0.4S

REV	DATE	CONTENTS	REVD BY	CHKD BY	CHKD BY	APPD BY	250-	315-	1000-	330
1							±0.1	±0.2	±0.3	±0.5
2							±0.1	±0.2	±0.3	±0.5
3							±0.1	±0.2	±0.3	±0.5
4							±0.1	±0.2	±0.3	±0.5
5							±0.1	±0.2	±0.3	±0.5

Q'TY	DESCRIPTION	MATERIAL	DIMENSION	WEIGHT	PART NO.	REMARK	NO.
1	EARTH TERMINAL LUG						5
1	CABLE ENTRY PLATE						4
1	GASKET	NBR					3
1	TERMINAL BOX COVER	CAST IRON					2
1	TERMINAL BOX BODY	CAST IRON					1

APPD BY	KANG KEONG JUNG	UNIT	INCH	Non Scale
CHKD BY	KIM JIN HONG	SCALE	3차 (3rd Angle)	
CHKD BY	KIM OK JIN	PROJEC'N	3차 (3rd Angle)	
DSND BY	KIM RYANG GYU	DATE	2011-10-21	

TITLE	Main Terminal Box Assembly	
SUBJECT	NEMA 400, 440	
DWG NO	3M-016882	Sheet No. of
REF. NO		Revision No. 0