

MODEL NUMBER	HHI200-18-447TSBB		
HORSEPOWER	200		
RPM / POLES	1800 / 4		
VOLTAGE / PHASE	460 V / 3		
FRAME	447TS		
ENCLOSURE / DEGREE OF PROTECTION	TEFC / IP55		
FREQUENCY	60 HZ		
FULL LOAD SPEED	1785 RPM		
SERVICE FACTOR	1.15 SF at 40° C / 1.0 SF at 65° C		
INSULATION CLASS	F Class N Varnish		
FULL LOAD AMPS; 460	222.4 A		
LOCKED ROTOR CURRENT (% Full Load)	700 %		
NEMA CODE LETTER	G		
EFFICIENCY / POWER FACTOR	<u>LOAD</u>	<u>EFF.</u>	<u>P.F.</u>
	100 %	96.2 %	88.0 %
	75 %	96.3 %	86.2 %
	50 %	95.4 %	80.6 %
DUTY CYCLE	S1 / Continuous		
TORQUE	<u>FULL LOAD</u>	<u>LRT</u>	<u>BDT</u>
	592.0 lb.ft.	140 %	220 %
NEMA DESIGN	B		
MOMENT OF INERTIA	<u>LOAD (Max.)</u>	<u>MOTOR</u>	
	2307.790 lb.ft. ²	73.030 lb.ft. ²	
SOUND PRESSURE LEVEL (No Load 1 M From Motor)	83 dB(A)		
NUMBER OF STARTS (Hot / Cold)	2 Hot / 3 Cold		
MAX. AMBIENT TEMPERATURE	40° C at 1.15 SF / 65° C at 1.0 SF		
MAX. ELEVATION	3300 Ft. Above Sea Level		
TEMPERATURE RISE (At Full Load)	80° C		
DRIVE-END BEARING	6318C3		
OPPOSITE DRIVE-END BEARING	6316C3		
GREASE TYPE	Mobil Polyrex EM		
MOUNTING	F1 (F2 Suitable), W6, W8, B3, V5, V6		
ROTATION	Bi-Directional		
APPROXIMATE WEIGHT	1860 lbs.		
AREA CLASSIFICATION	Class I, Division 2, Groups A, B, C, D		
INVERTER RATING	10:1 CT / 20:1 VT - Meets NEMA MG1 Part 31		
SPECIFICATION - In Accordance With	NEMA, CSA		



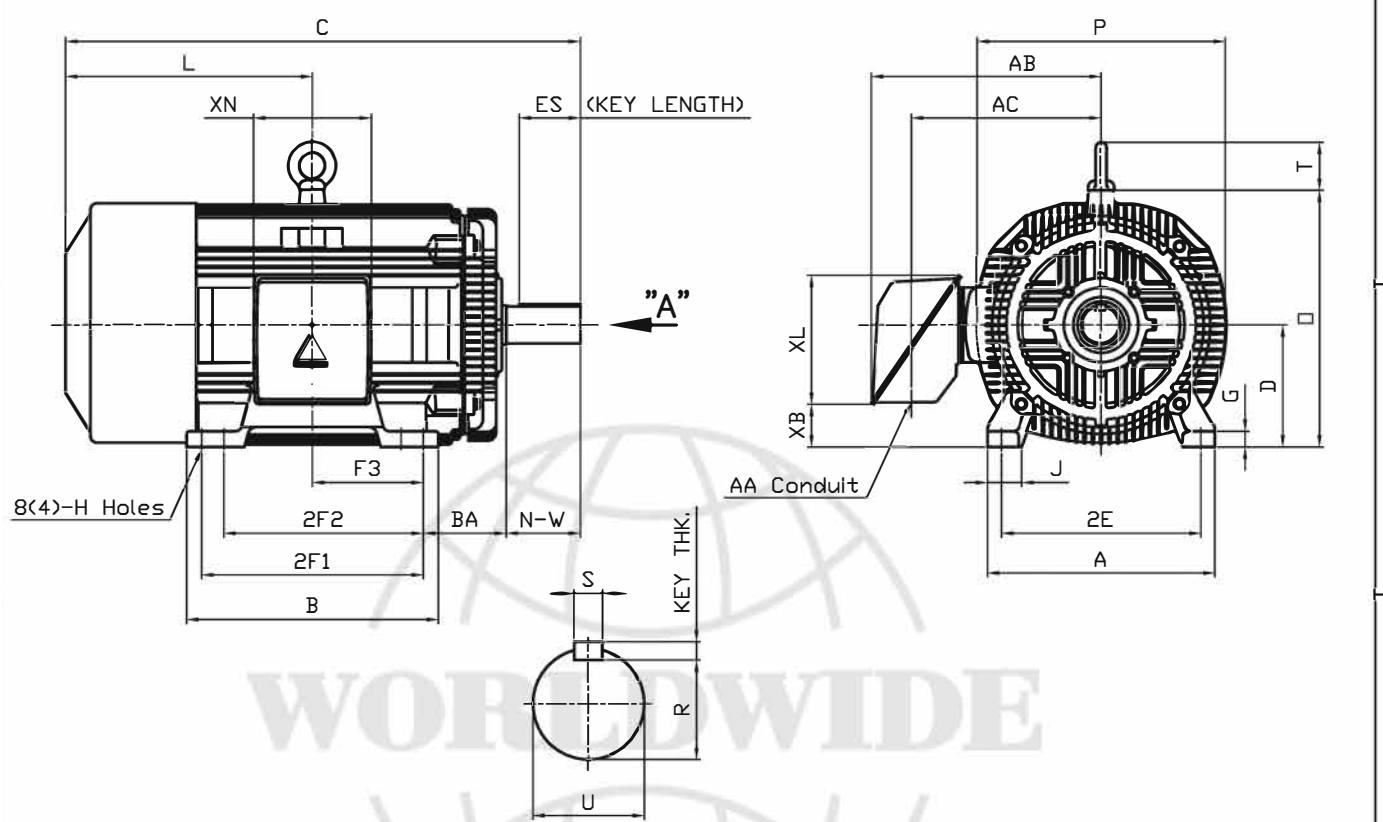
CC 038A



본 도면은 현대중공업(주) 재산이므로
허가없이 복사할 수 없음 (취급주의)

THIS DRAWING IS PROPRIETARY TO HEECO. NO PART OF THIS DRAWING
MAYBE REPRODUCED WITHOUT THE PERMISSION OF HHI.

		T E F C		TYPE	LP, JP
		THREE PHASE INDUCTION MOTOR			Cast iron frame
FRAME SIZE	OUTPUT(HP)	POLES	Hz	TIME RATING	
447TS-4P			60	CONT	



DIMENSIONS

VIEW "A"

M O U N T I N G									C B O X					APPROX. WGT.(LB)	
A	B	2E	2F1	2F2	F3	G	J	H	AA	AB	AC	XB	XL		XN
20.51	22.72	18.00	20.00	(17.99)	10.000	1.42	3.07	0.81	3.00	21.26	18.03	3.83	11.65	10.63	1900

O V E R A L L							S H A F T			KEY	BEARING			
BA	C	D	L	O	P	T	U	N- W	KEYWAY			THK.	DRIVE END	OPP. DRIVE END
									R	ES	S			
7.50	44.96	11.00	22.71	23.19	22.40	4.33	2.375	4.75	2.021	3.03	0.625	0.625	6318C3	6316C3

NOTE

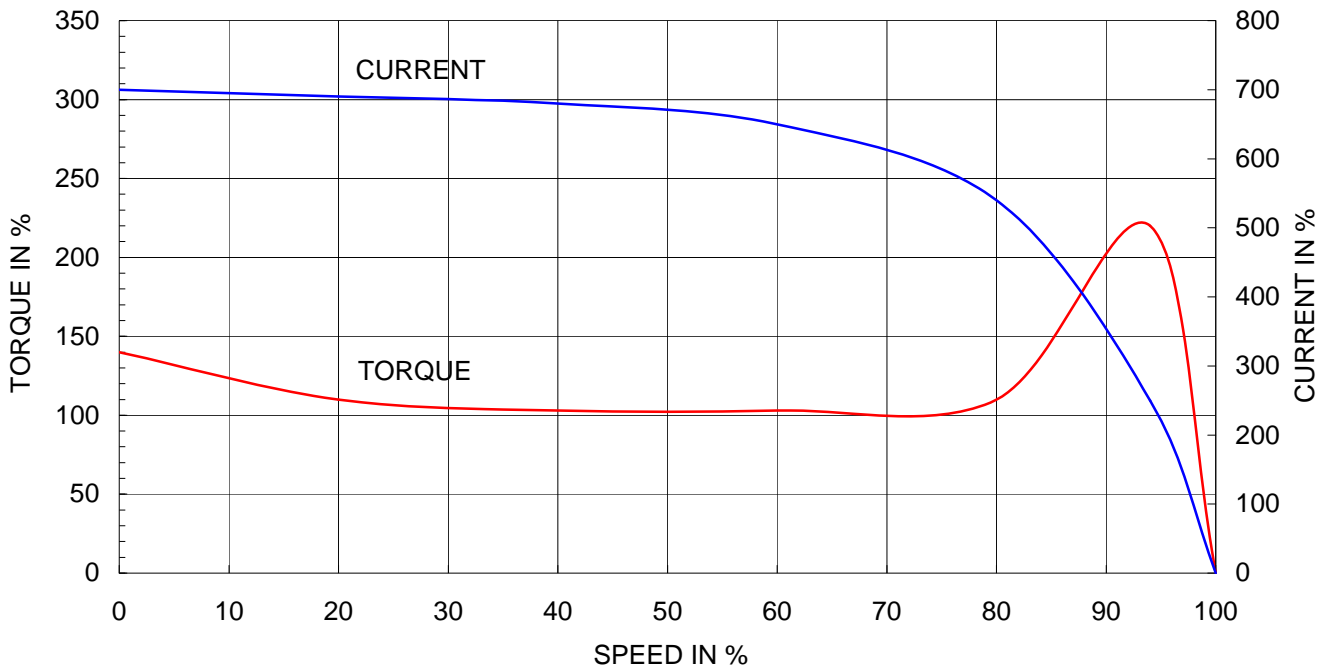
- 1. Dimension "D" tolerance : +0.00inch - 0.03inch (143T-365T) ; +0.000inch - 0.06inch (404T-449T)
- 2. Dimension "U" tolerance : +0.000inch - 0.005inch (143T-215T), +0.000inch - 0.001inch (254T-449T)
- 3. Dimension "R" tolerance : +0.000inch - 0.015inch
- △ 4. 2F2 foot provision allows F1 to F2 conversion

Q'TY	DESCRIPTION	MATERIAL	DIMENSION	WEIGHT	PART NO.	REMARK	NO.
APPD BY	K.J. KANG	UNIT	INCH	SUBJECT	447TS	CAD PROJ	FILE
Q.P CHK		SCALE	N/S	TITLE	MMSTDMTR\A1119BA		
CHKD BY		PROJEC'N	3 각법(3rd Angle)	OUTLINE			
DSND BY	N.D.LEE	DATE	2011.02.09				

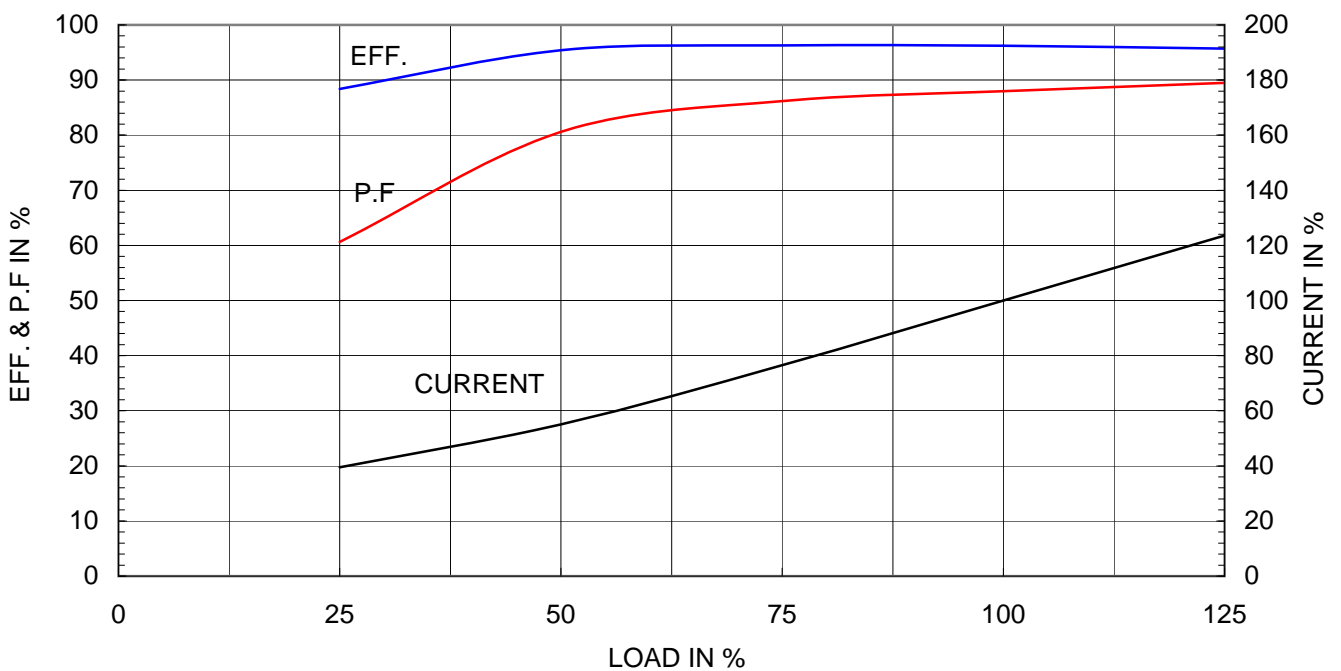
Type	: PLP
Full Load Torque	: 592.0 lb.ft
Motor moment of Inertia (J)	: 73.030 lb.ft ²
Load moment of Inertia (J)	: 2307.790 lb.ft ²

150 kW	200 HP	60 Hz	
4 P	Rated Speed	: 1785 RPM	
Rated Voltage	575V	460V	230V
Full Load Current	177.9A	222.4A	444.8A

SPEED VS TORQUE & CURRENT CURVE



OUTPUT VS EFF., P.F & CURRENT CURVE





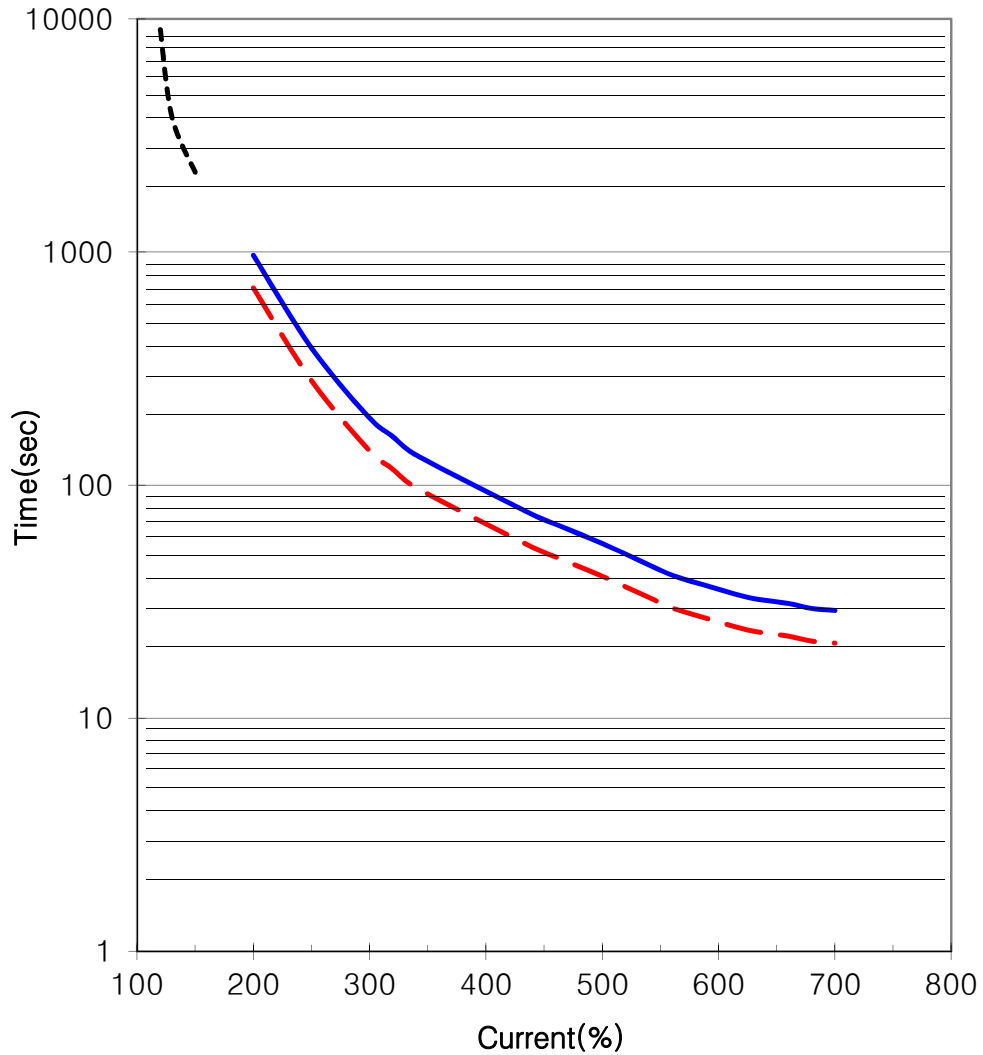
THERMAL LIMIT & TIME CURRENT CURVE

CURVE NO.

T-PLP200-18-447TSBB

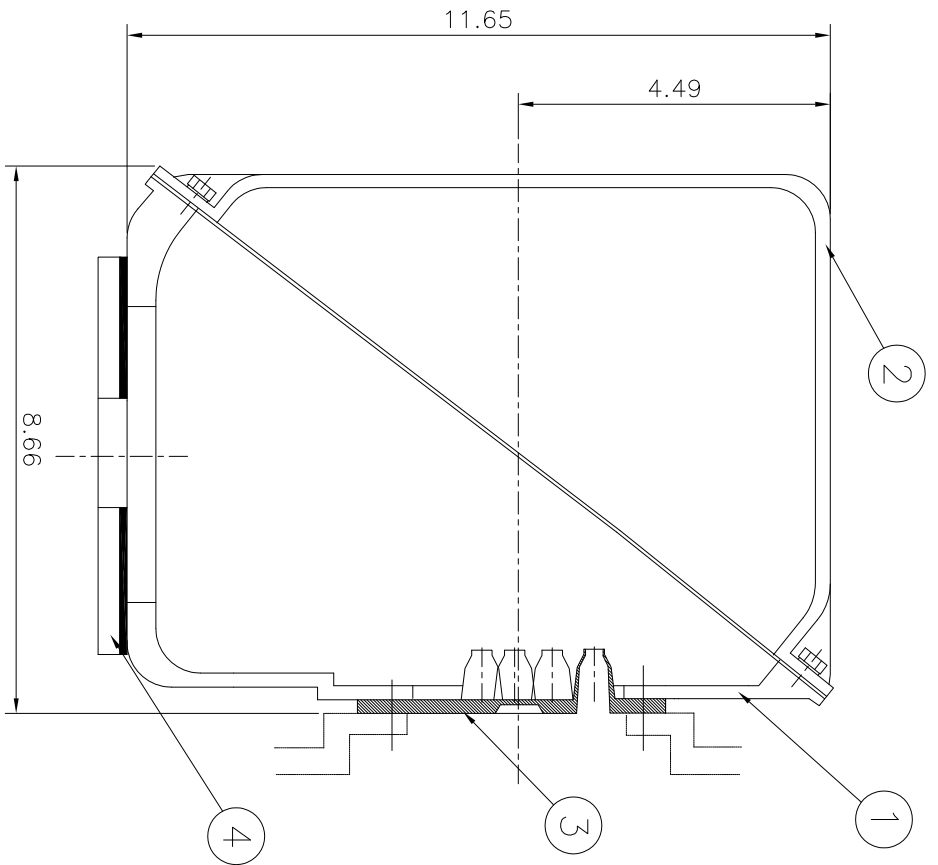
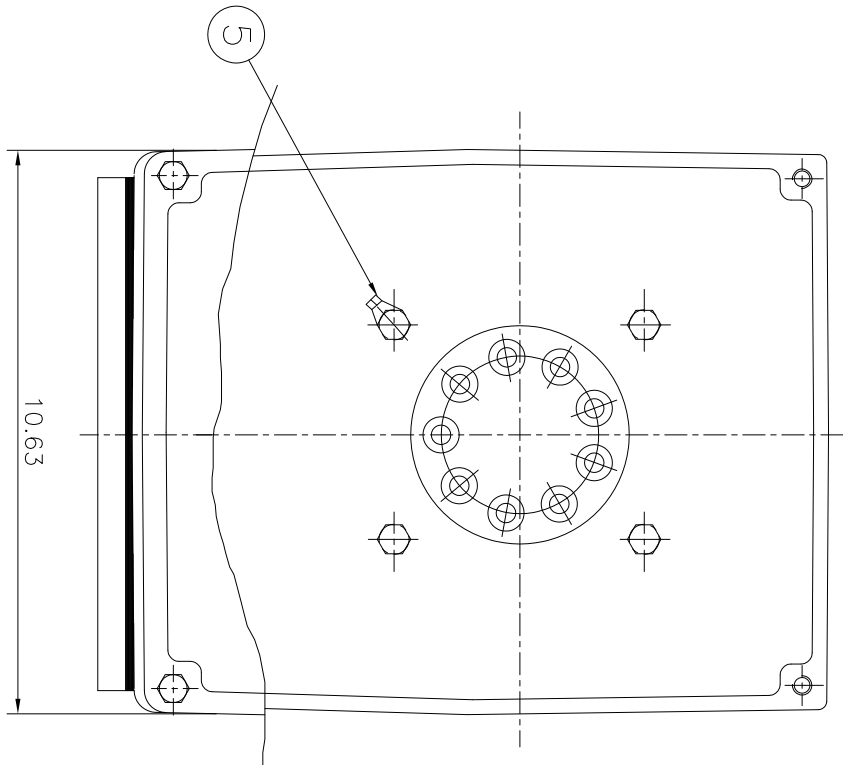
Type :	PLP200-18-447T	
FULL LOAD TORQUE :	592.0	lb.ft
J OF LOAD :	-	lb.ft ²
J OF MOTOR :	73.0	lb.ft ²

200	HP	4	P	60	Hz
RATED SPEED :		1785 rpm			
VOLTAGE		460 V	575 V		
RATED CURRENT		222.4A	177.9A		



— THERMAL LIMIT CURVE AT COLD CONDITION
- - THERMAL LIMIT CURVE AT HOT CONDITION

STARTING TIME	SAFE STALL TIME
- at rated voltage starting	21 sec. at Hot condition
- at 80% of rated voltage starting	29 sec. at Cold condition



▽	SOS
▽▽	12.5S
▽▽▽	3.2S
▽▽▽▽	0.4S

REV	DATE	CONTENTS	REVD BY	CHKD BY	CHKD BY	APPD BY
1						
2						
3						
4						

1-4	±0.1	6-30	±0.5
4-18	±0.2	30-120	±0.8
18-63	±0.3	120-315	±1.2
63-250	±0.5	315-1000	±2.0
	±0.8	1000-	±3.0

APPD BY	KANG KREONG JUNG	UNIT	INCH	SCALE	Non Scale
CHKD BY	KIM JIN HONG	PROJECT	3차 (3rd Angle)	DATE	2011-10-21
DSND BY	KIM RYANG GYU	TITLE	Main Terminal Box Assembly		

Q'TY	DESCRIPTION	MATERIAL	DIMENSION	WEIGHT	PART NO.	REMARK	NO.
1	EARTH TERMINAL LUG						5
1	CABLE ENTRY PLATE						4
1	GASKET	NBR					3
1	TERMINAL BOX COVER	CAST IRON					2
1	TERMINAL BOX BODY	CAST IRON					1

APPD BY	KANG KREONG JUNG	UNIT	INCH	SCALE	Non Scale
CHKD BY	KIM JIN HONG	PROJECT	3차 (3rd Angle)	DATE	2011-10-21
DSND BY	KIM RYANG GYU	TITLE	Main Terminal Box Assembly		

REF. NO	DWG NO	3M-016882	SHEET NO.	0
			of	