

MODEL NUMBER	HHI200-36-447TS		
HORSEPOWER	200		
RPM / POLES	3600 / 2		
VOLTAGE / PHASE	460 V / 3		
FRAME	447TS		
ENCLOSURE / DEGREE OF PROTECTION	TEFC / IP55		
FREQUENCY	60 HZ		
FULL LOAD SPEED	3570 RPM		
SERVICE FACTOR	1.15 SF at 40° C / 1.0 SF at 65° C		
INSULATION CLASS	F Class N Varnish		
FULL LOAD AMPS; 460	219.3 A		
LOCKED ROTOR CURRENT (% Full Load)	700 %		
NEMA CODE LETTER	G		
EFFICIENCY / POWER FACTOR	<u>LOAD</u>	<u>EFF.</u>	<u>P.F.</u>
	100 %	95.4 %	90.0 %
	75 %	95.4 %	89.0 %
	50 %	93.9 %	87.0 %
DUTY CYCLE	S1 / Continuous		
TORQUE	<u>FULL LOAD</u>	<u>LRT</u>	<u>BDT</u>
	296.0 lb.ft.	120 %	220 %
NEMA DESIGN	B		
MOMENT OF INERTIA	<u>LOAD (Max.)</u>	<u>MOTOR</u>	
	341.126 lb.ft. <sup>2</sup>	44.130 lb.ft. <sup>2</sup>	
SOUND PRESSURE LEVEL ( No Load 1 M From Motor)	90 dB(A)		
NUMBER OF STARTS (Hot / Cold)	2 Hot / 3 Cold		
MAX. AMBIENT TEMPERATURE	40° C at 1.15 SF / 65° C at 1.0 SF		
MAX. ELEVATION	3300 Ft. Above Sea Level		
TEMPERATURE RISE (At Full Load)	80° C		
DRIVE-END BEARING	6314C3		
OPPOSITE DRIVE-END BEARING	6314C3		
GREASE TYPE	Mobil Polyrex EM		
MOUNTING	F1 (F2 Suitable), W6, W8, B3, V5, V6		
ROTATION	Bi-Directional		
APPROXIMATE WEIGHT	1900 lbs.		
AREA CLASSIFICATION	Class I, Division 2, Groups A, B, C, D		
INVERTER RATING	10:1 CT / 20:1 VT - Meets NEMA MG1 Part 31		
SPECIFICATION - In Accordance With	NEMA, CSA		



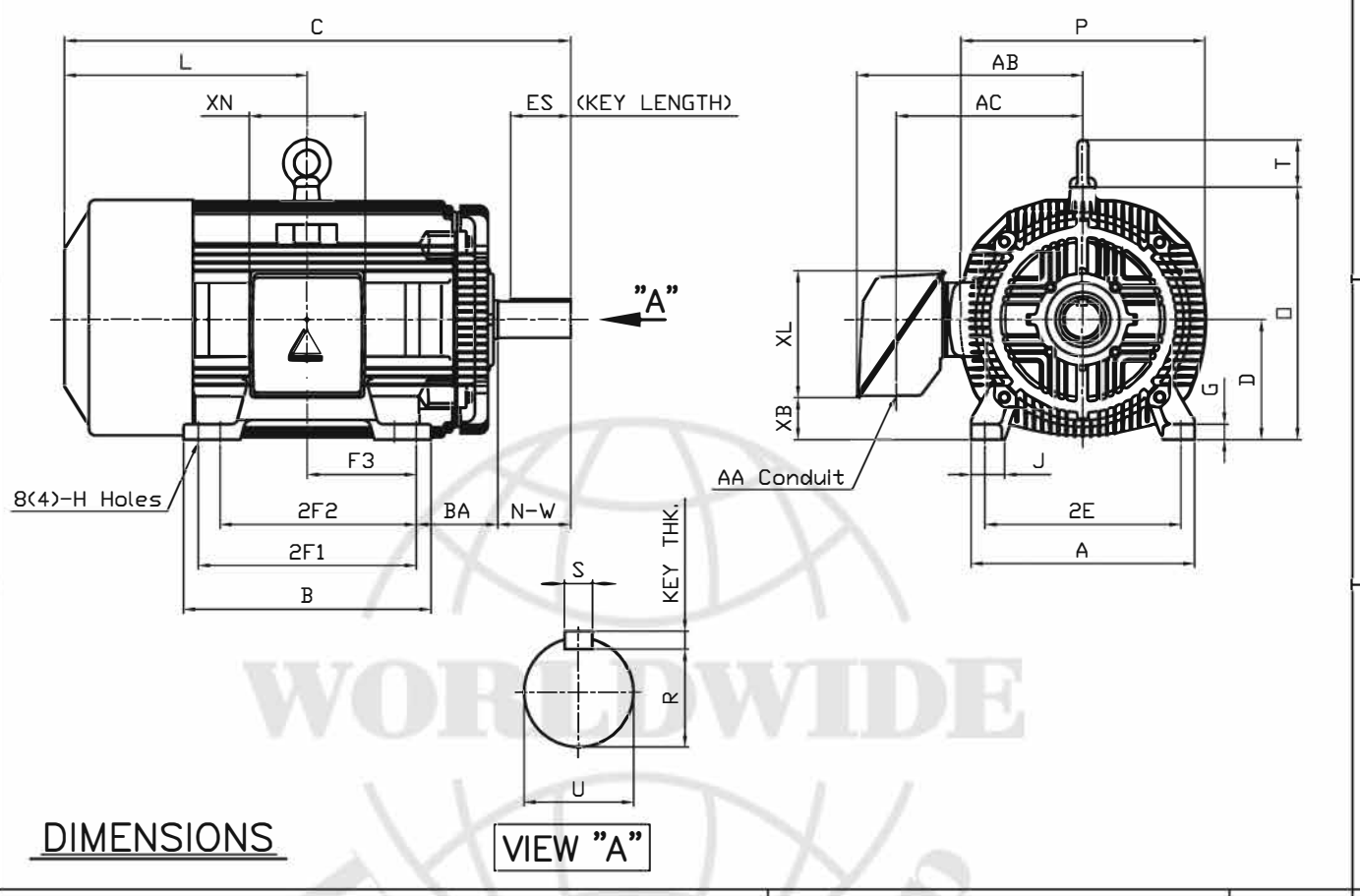
CC 038A



본 도면은 현대중공업(주) 재산이므로  
허가없이 복사할 수 없음 (취급주의)

THIS DRAWING IS PROPRIETARY TO HEECO. NO PART OF THIS DRAWING  
MAYBE REPRODUCED WITHOUT THE PERMISSION OF HHI.

		<h1>TEFC</h1> <h2>THREE PHASE INDUCTION MOTOR</h2>		<b>TYPE</b> LP, JP Cast iron frame
FRAME SIZE	OUTPUT(HP)	POLES	Hz	TIME RATING
447TS-2P			60	CONT



M O U N T I N G									C B O X					APPROX. WGT.(LB)	
A	B	2E	2F1	2F2	F3	G	J	H	AA	AB	AC	XB	XL	XN	
20.51	22.72	18.00	20.00	(17.99)	10.000	1.42	3.07	0.81	3.00	21.26	18.03	3.83	11.65	10.63	1900

O V E R A L L							S H A F T			KEY	BEARING			
BA	C	D	L	O	P	T	U	N- W	KEYWAY			THK.	DRIVE END	OPP. DRIVE END
									R	ES	S			
7.50	44.96	11.00	22.71	23.19	22.40	4.33	2.375	4.75	2.021	3.03	0.625	0.625	6314C3	6314C3

**NOTE**

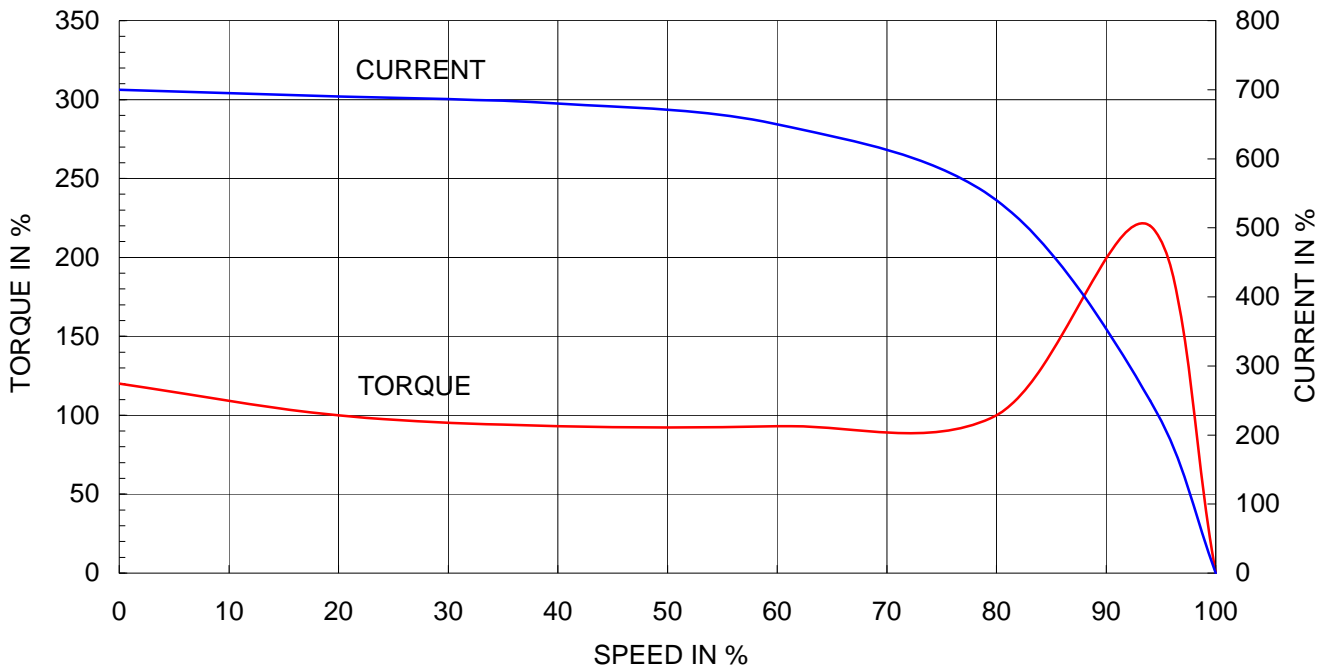
- Dimension "D" tolerance : +0.00inch - 0.03inch (143T-365T) ; +0.000inch - 0.06inch (404T-449T)
- Dimension "U" tolerance : +0.000inch - 0.005inch (143T-215T), +0.000inch - 0.001inch (254T-449T)
- Dimension "R" tolerance : +0.000inch - 0.015inch
4. 2F2 foot provision allows F1 to F2 conversion

Q'TY	DESCRIPTION	MATERIAL	DIMENSION	WEIGHT	PART NO.	REMARK	NO.
APPD BY	K.J. KANG	UNIT	INCH	SUBJECT	447TS	CAD PROJ  FILE	
Q.P CHK		SCALE	N/S	TITLE	<h1>OUTLINE</h1>		
CHKD BY		PROJEC'N	3 각법(3rd Angle)				
DSND BY	N.D.LEE	DATE	2011.02.09				
		REF. NO	A1119BA	Sheet No.	of		
		DWG NO	350A1119BA	Revision No.	0		

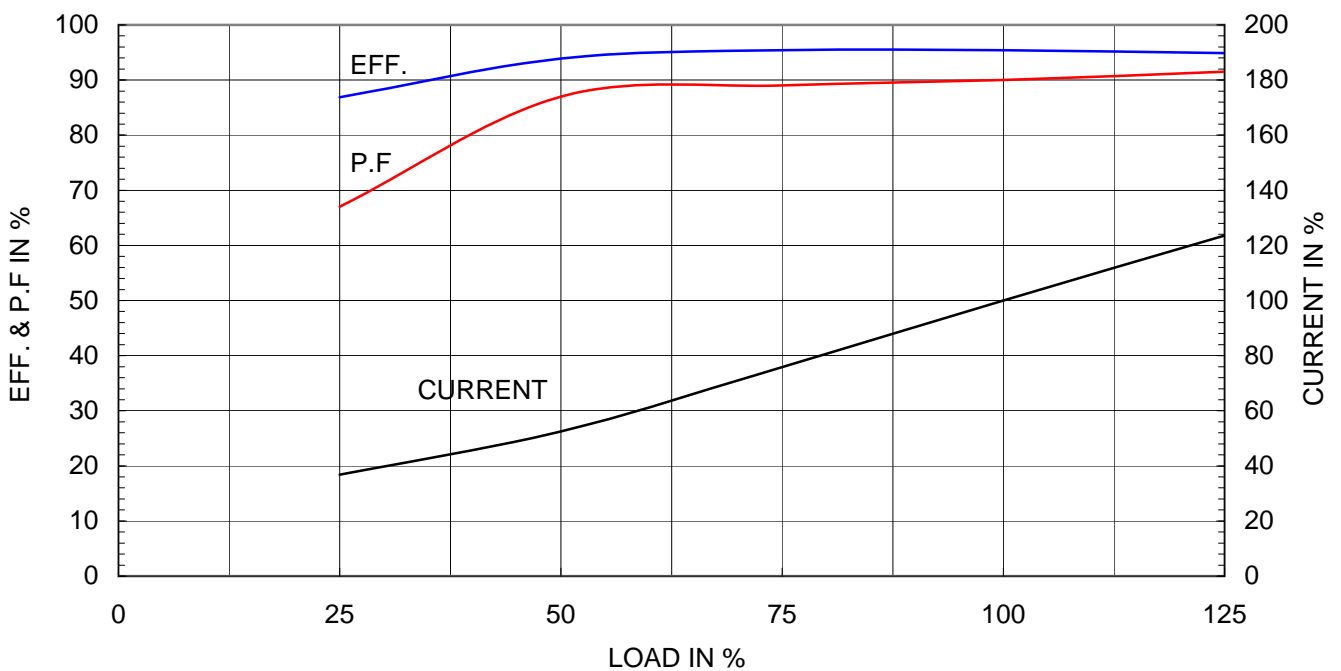
Type	: PLP
Full Load Torque	: 296.0 lb.ft
Motor moment of Inertia (J)	: 44.130 lb.ft <sup>2</sup>
Load moment of Inertia (J)	: 341.126 lb.ft <sup>2</sup>

150 kW	200 HP	60 Hz	
2 P	Rated Speed	: 3570 RPM	
Rated Voltage	575V	460V	230V
Full Load Current	175.4A	219.3A	438.5A

SPEED VS TORQUE & CURRENT CURVE



OUTPUT VS EFF., P.F & CURRENT CURVE



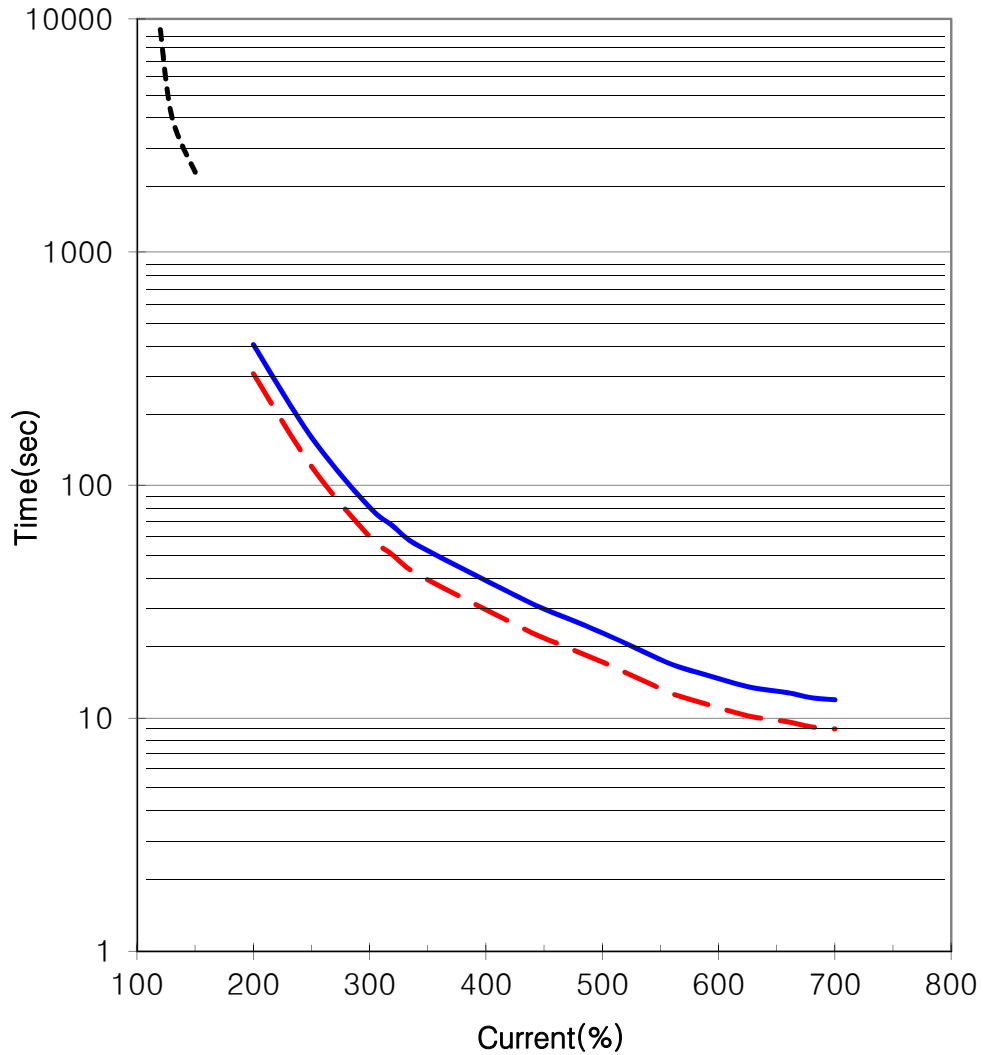


### THERMAL LIMIT & TIME CURRENT CURVE

CURVE NO.

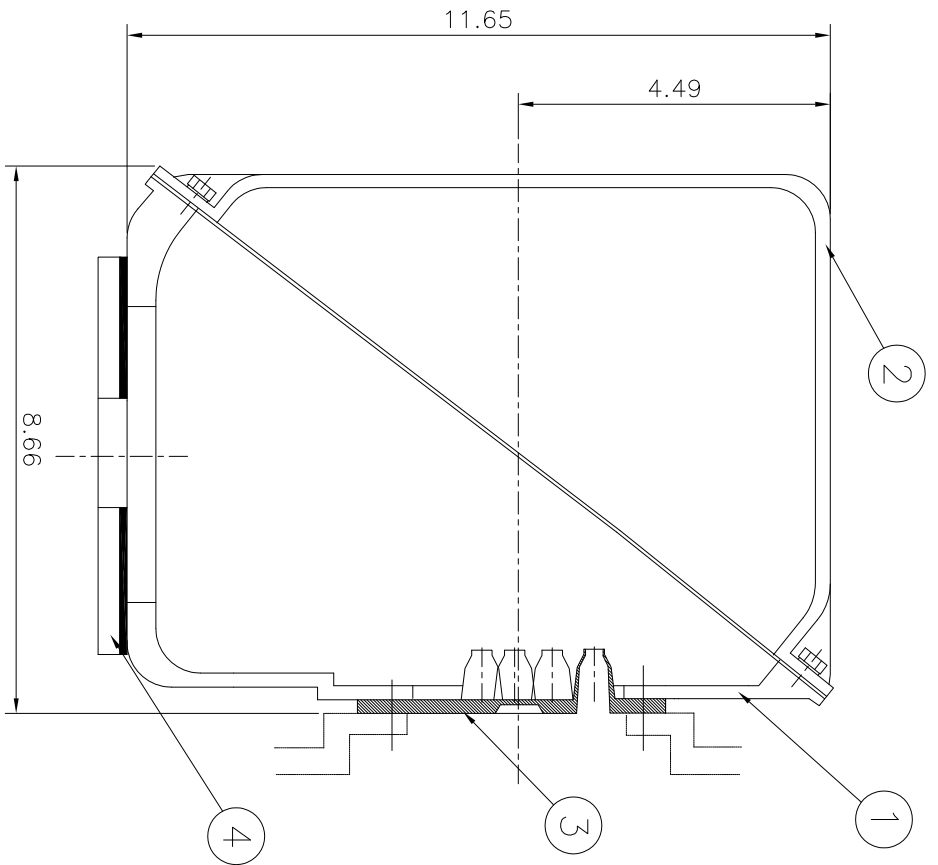
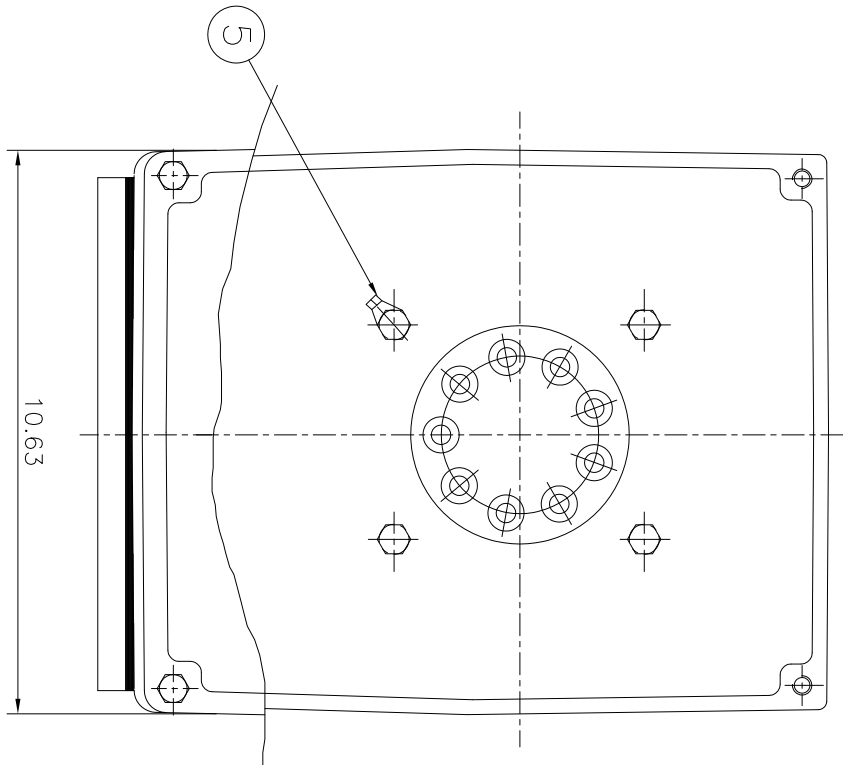
T-PLP200-36-447TS

Type :	PLP200-36-447TS	200 HP	2 P	60 Hz
FULL LOAD TORQUE :	296.0 lb.ft	RATED SPEED : 3570 rpm		
J OF LOAD :	- lb.ft <sup>2</sup>	VOLTAGE	460 V	575 V
J OF MOTOR :	44.1 lb.ft <sup>2</sup>	RATED CURRENT	219.3A	175.4A



— THERMAL LIMIT CURVE AT COLD CONDITION  
- - THERMAL LIMIT CURVE AT HOT CONDITION

STARTING TIME	SAFE STALL TIME
- at rated voltage starting	9 sec. at Hot condition
- at 80% of rated voltage starting	12 sec. at Cold condition



▽	SOS	
▽▽	12.5S	
▽▽▽	3.2S	
▽▽▽▽	0.4S	

1	EARTH TERMINAL LUG																				
1	CABLE ENTRY PLATE																				
1	GASKET	NBR																			
1	TERMINAL BOX COVER	CAST IRON																			
1	TERMINAL BOX BODY	CAST IRON																			

APPD BY	KANG KEONG JUNG	UNIT	INCH	SCALE	Non Scale
CHKD BY	KIM JIN HONG	PROJECT	3차 (3rd Angle)	DATE	2011-10-21
DSND BY	KIM RYANG GYU	TITLE	Main Terminal Box Assembly		
REF. NO.		SUBJECT	NEMA 400, 440		
DWG NO.	3M-016882	WEIGHT		PART NO.	
		DWG SIZE	A3 (1:1)		
		SHEET NO.	of		
		REVISION NO.	0		