

|  |  |                            |             |
|--|--|----------------------------|-------------|
| MODEL NUMBER                                   | HHI75-18-575-365T                          |                            |             |
| HORSEPOWER                                     | 75   |                            |             |
| RPM / POLES                                    | 1800 / 4                                   |                            |             |
| VOLTAGE / PHASE                                | 575 V / 3                                  |                            |             |
| FRAME  | 365T                                       |                            |             |
| ENCLOSURE / DEGREE OF PROTECTION               | TEFC / IP55                                |                            |             |
| FREQUENCY                                      | 60 HZ                                      |                            |             |
| FULL LOAD SPEED                                | 1780 RPM                                   |                            |             |
| SERVICE FACTOR                                 | 1.15 SF at 40° C / 1.0 SF at 65° C         |                            |             |
| INSULATION CLASS                               | F Class N Varnish                          |                            |             |
| FULL LOAD AMPS; 575                            | 68.1 A                                     |                            |             |
| LOCKED ROTOR CURRENT (% Full Load)             | 690 %                                      |                            |             |
| NEMA CODE LETTER                               | G  |                            |             |
| EFFICIENCY / POWER FACTOR                      | <u>LOAD</u>                                | <u>EFF.</u>                | <u>P.F.</u> |
|  | 100 %                                      | 95.4 %                     | 85.0 %      |
|  | 75 %                                       | 95.5 %                     | 81.9 %      |
|  | 50 %                                       | 93.6 %                     | 74.1 %      |
| DUTY CYCLE                                     | S1 / Continuous                            |                            |             |
| TORQUE   | <u>FULL LOAD</u>                           | <u>LRT</u>                 | <u>BDT</u>  |
|  | 217.7 lb.ft.                               | 150 %                      | 220 %       |
| NEMA DESIGN                                    | B  |                            |             |
| MOMENT OF INERTIA                              | <u>LOAD (Max.)</u>                         | <u>MOTOR</u>               |             |
|  | 654.961 lb.ft. <sup>2</sup>                | 20.900 lb.ft. <sup>2</sup> |             |
| SOUND PRESSURE LEVEL ( No Load 1 M From Motor) | 82 dB(A)                                   |                            |             |
| NUMBER OF STARTS (Hot / Cold)                  | 2 Hot / 3 Cold                             |                            |             |
| MAX. AMBIENT TEMPERATURE                       | 40° C at 1.15 SF / 65° C at 1.0 SF         |                            |             |
| MAX. ELEVATION                                 | 3300 Ft. Above Sea Level                   |                            |             |
| TEMPERATURE RISE (At Full Load)                | 80° C                                      |                            |             |
| DRIVE-END BEARING                              | 6314C3                                     |                            |             |
| OPPOSITE DRIVE-END BEARING                     | 6213C3                                     |                            |             |
| GREASE TYPE                                    | Mobil Polyrex EM                           |                            |             |
| MOUNTING                                       | F1 (F2 Suitable), W6, W8, B3, V5, V6       |                            |             |
| ROTATION                                       | Bi-Directional                             |                            |             |
| APPROXIMATE WEIGHT                             | 820 lbs.                                   |                            |             |
| AREA CLASSIFICATION                            | Class I, Division 2, Groups A, B, C, D     |                            |             |
| INVERTER RATING                                | 10:1 CT / 20:1 VT - Meets NEMA MG1 Part 31 |                            |             |
| SPECIFICATION - In Accordance With             | NEMA, CSA                                  |                            |             |



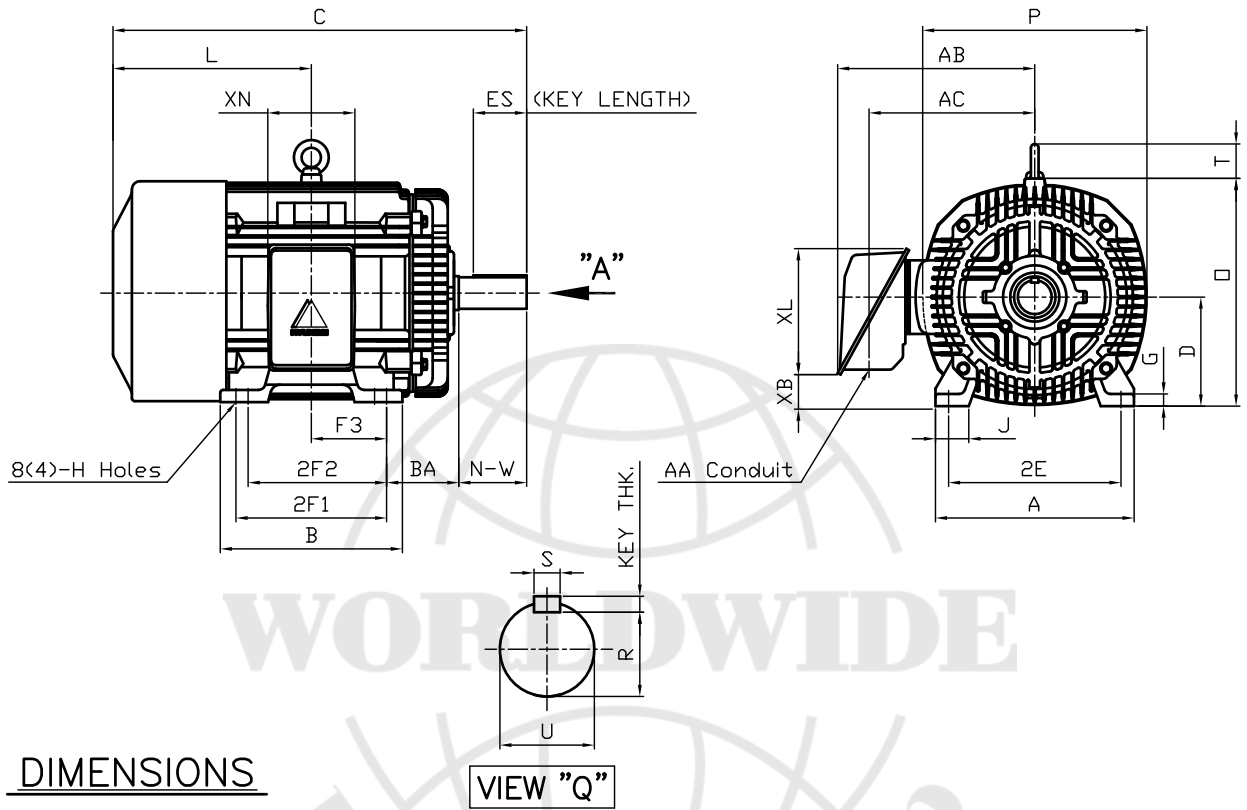
CC 038A



본 도면은 현대중공업(주) 재산이므로  
허가없이 복사할 수 없음 (취급유의)

THIS DRAWING IS PROPRIETARY TO HEECO. NO PART OF THIS DRAWING  
MAYBE REPRODUCED WITHOUT THE PERMISSION OF HHI.

|  |  |   |  |       |  |                                   |             |
|--|--|---|--|-------|--|-----------------------------------|-------------|
| 1  |  | 2   |  | 3     |  | 4                                 |             |
| <b>HYUNDAI</b><br>HEAVY INDUSTRIES CO., LTD. |  | <b>T E F C</b><br>THREE PHASE INDUCTION MOTOR |  |       |  | TYPE<br>LP, JP<br>Cast iron frame |             |
| FRAME SIZE                                   |  | OUTPUT(HP)                                    |  | POLES |  | Hz                                | TIME RATING |
| 365T   |  |   |  |       |  | 60                                | CONT        |



| M O U N T I N G |       |       |       |         |       |      |      |      | C O N D U I T B O X |       |       |      |       | APPROX. WGT.(LB) |     |
|-----------------|-------|-------|-------|---------|-------|------|------|------|---------------------|-------|-------|------|-------|------------------|-----|
| A               | B     | 2E    | 2F1   | 2F2     | F3    | G    | J    | H    | AA                  | AB    | AC    | XB   | XL    | XN               |     |
| 16.14           | 14.92 | 14.00 | 12.25 | (11.25) | 6.122 | 0.98 | 2.72 | 0.66 | 3.00                | 17.13 | 13.82 | 2.70 | 10.24 | 7.09             | 820 |

| O V E R A L L |       |      |       |       |       |      |       | S H A F T |        |      | KEY   | BEARING |           |                |
|---------------|-------|------|-------|-------|-------|------|-------|-----------|--------|------|-------|---------|-----------|----------------|
| BA            | C     | D    | L     | O     | P     | T    | U     | N-W       | KEYWAY |      |       | THK.    | DRIVE END | OPP. DRIVE END |
|               |       |      |       |       |       |      |       |           | R      | ES   | S     |         |           |                |
| 5.88          | 34.01 | 9.00 | 16.13 | 18.50 | 18.23 | 2.80 | 2.375 | 5.88      | 2.021  | 4.28 | 0.625 | 0.625   | 6314C3    | 6213C3         |

**NOTE**

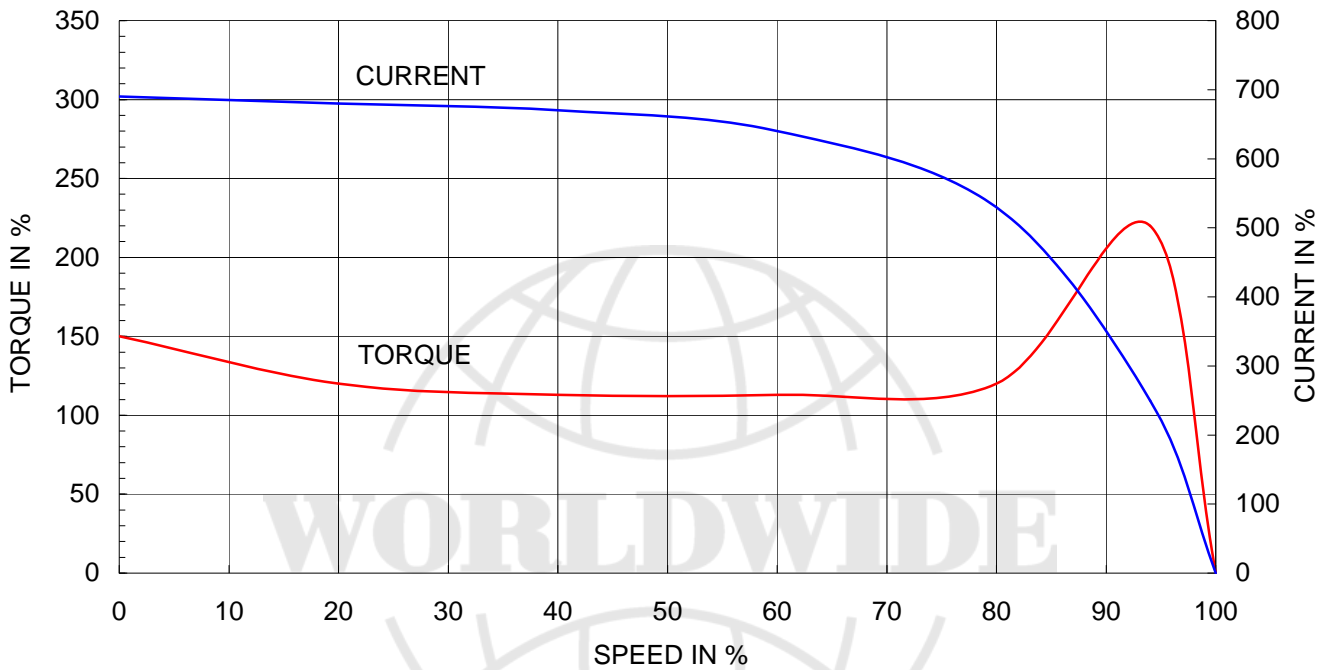
1. Dimension "D" tolerance : +0.00inch - 0.03inch (143T-365T) ; +0.000inch - 0.06inch (404T-449T)
2. Dimension "U" tolerance : +0.000inch - 0.005inch (143T-215T), +0.000inch - 0.001inch (254T-449T)
3. Dimension "R" tolerance : +0.000inch - 0.015inch

| Q'TY    | DESCRIPTION | MATERIAL | DIMENSION       | WEIGHT  | PART NO.   | REMARK              | NO. |
|---------|-------------|----------|-----------------|---------|------------|---------------------|-----|
| APPD BY | K.J. Kang   | UNIT     | INCH            | SUBJECT | 365T       | CAD PROJ 명 \ FILE 명 |     |
| Q.P CHK |             | SCALE    | N/S             | TITLE   | OUTLINE    |                     |     |
| CHKD BY |             | PROJEC'N | 3 각법(3rd Angle) | REF. NO | A1114AA    | Sheet No.           | of  |
| DSND BY | N.D.Lee     | DATE     | 2011.01.12      | DWG NO  | 350A1114AA | Revision No.        | 0   |

|                             |                              |
|-----------------------------|------------------------------|
| Type                        | : PLP                        |
| Full Load Torque            | : 217.7 lb.ft                |
| Motor moment of Inertia (J) | : 20.900 lb.ft <sup>2</sup>  |
| Load moment of Inertia (J)  | : 654.961 lb.ft <sup>2</sup> |

|                   |                        |       |
|-------------------|------------------------|-------|
| 55 kW             | 75 HP                  | 60 Hz |
| 4 P               | Rated Speed : 1780 RPM |       |
| Rated Voltage     | 575V                   | 460V  |
| Full Load Current | 68.1A                  | 85.1A |

SPEED VS TORQUE & CURRENT CURVE



OUTPUT VS EFF., P.F & CURRENT CURVE

