



WORLDWIDE ELECTRIC MOTOR DATA SHEET



NT12-36-56CB

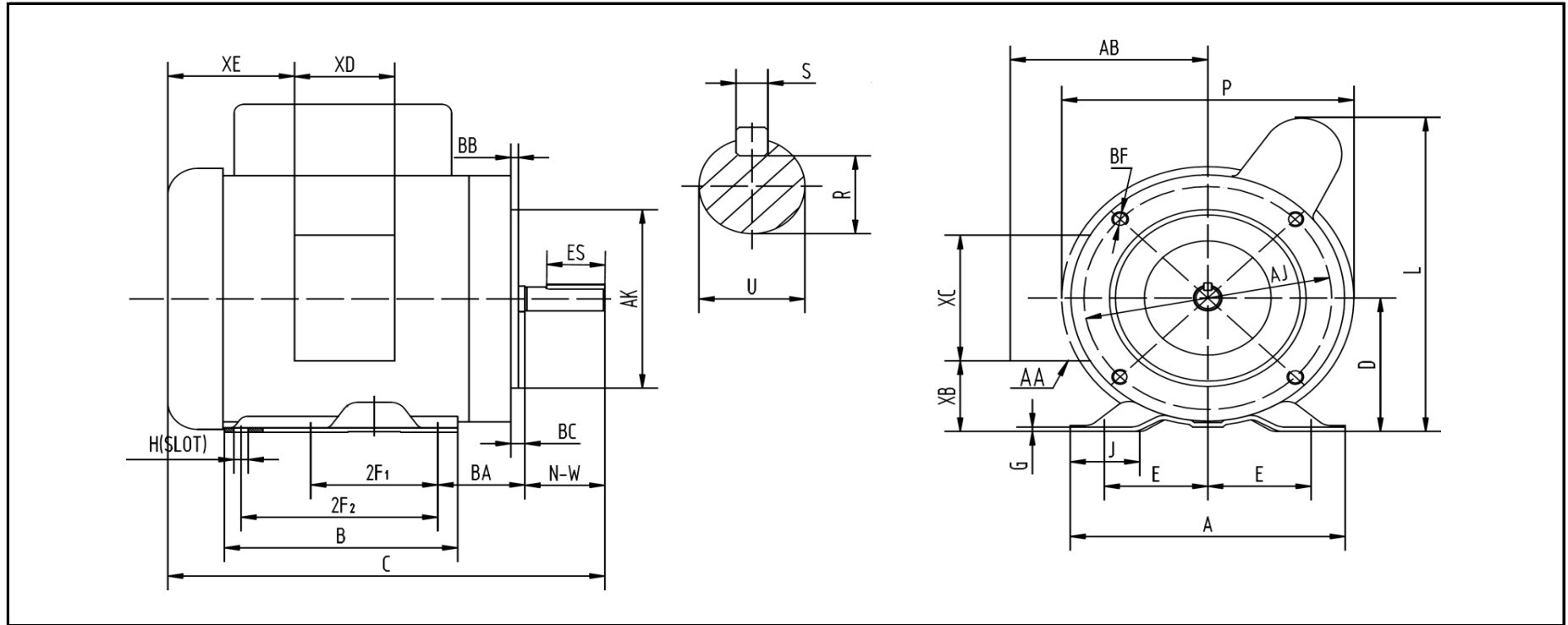
FREQUENCY	60 HZ	50 HZ	
HORSEPOWER	1/2	1/3	
RPM / POLES	3600 / 2	3000 / 2	
VOLTAGE / PHASE	115/208-230 V / 1	110/220 V / 1	
FULL LOAD AMPS; 115 / 230 (110 / 220)	6.5 / 3.4- 3.3 A	6.4 / 3.2 A	
FULL LOAD SPEED	3450 RPM	2850 RPM	
SERVICE FACTOR	1.15	1.00	
FRAME	56C		
ENCLOSURE / DEGREE OF PROTECTION	TEFC / IP43		
INSULATION CLASS	F		
EFFICIENCY / POWER FACTOR	<u>LOAD</u>	<u>EFF.</u>	<u>P.F.</u>
	100%	63.0%	0.74
DUTY CYCLE	Continuous		
MAX. AMBIENT TEMPERATURE	40° C		
MAX. ELEVATION	3300 Ft. Above Sea Level		
TEMPERATURE RISE (At Full Load)	80° C		
DE BEARING	6203		
ODE BEARING	6203		
REGREASING INT. - DE BEARING	---		
REGREASING INT. - ODE BEARING	---		
GREASE TYPE	Mobil Polyrex EM		
MOUNTING	F1		
ROTATION	Bi-Directional		
CONNECTION DIAGRAM	115/230 V (110/220 V) - 6 Lead		
APPROXIMATE WEIGHT	23 lbs.		
INVERTER RATING	---		
START CAPACITOR	300UF/165V		
RUN CAPACITOR	---		





WORLDWIDE ELECTRIC MOTOR DRAWING

NT12-36-56CB



DIMENSIONS - INCHES

MOUNTING					A	B	C	D	G	J	L	P	AB	BC
E	2F1	2F2	H	BA										
2.44	3	5	0.34	2.75	6.54	6.54	11.9	3.5	0.12	1.65	8.2	7.3	5.2	-0.19

KEY		KEYSET	FLANGE				SHAFT			TERMINAL BOX				
S	ES	R	AK	AJ	BF	BB	N-W	U	AA	XB	XC	XD	XE	
0.188	1.41	0.517	4.5	5.875	3/8-16	0.16	1.88	0.625	3-0.88 / 2-1.109	1.65	3.7	3.2	2.15	

REVISED - 01/11/18