



WORLDWIDE ELECTRIC MOTOR DATA SHEET

PEWWE15-12-284T



HORSEPOWER	15		
RPM / POLES	1200 / 6		
VOLTAGE / PHASE	230 / 460 V / 3		
FRAME	284T		
ENCLOSURE / DEGREE OF PROTECTION	TEFC / IP55		
FREQUENCY	60 HZ Suitable For 50 HZ Operation With 1.0 SF		
FULL LOAD SPEED	1185 RPM		
SERVICE FACTOR	1.25		
INSULATION CLASS	F		
FULL LOAD AMPS; 230 / 460	38.8 / 19.4 A (Usable On 208V At 42.9 A)		
LOCKED ROTOR AMPS (STARTING); 230 / 460	232 / 116 A		
NO LOAD CURRENT	17 / 8.5 A		
NEMA CODE LETTER	G		
EFFICIENCY / POWER FACTOR	<u>LOAD</u>	<u>EFF.</u>	<u>P.F.</u>
	100 %	91.7%	0.79
	75 %	92.0%	0.75
	50 %	91.4%	0.65
DUTY CYCLE	S1 / Continuous		
TORQUE	<u>FULL LOAD</u>	<u>LRT</u>	<u>BDT</u>
	66.5 lb.ft.	145%	230%
SLIP	1.25 %		
NEMA DESIGN	B		
MOMENT OF INERTIA	3.61 lb.ft. ²		
MAX. TIME LOCKED ROTOR (Hot)	15 Seconds		
SOUND PRESSURE LEVEL	70 dB (A)		
MAX. AMBIENT TEMPERATURE	40° C		
MAX. ELEVATION	3300 Ft.		
TEMPERATURE RISE (At Full Load)	80° C		
DE BEARING	6311 C3		
ODE BEARING	6309 C3		
REGREASING INT. - DE BEARING	6000 Hours		
REGREASING INT. - ODE BEARING	7500 Hours		
GREASE TYPE	SKF LGHP 2		
MOUNTING	F1 (F2 Suitable)		
ROTATION	Bi-Directional		
SHAFT MATERIAL	1045 Carbon Steel		
INVERTER RATING	10:1 CT / 20:1 VT PWM Type		
CONNECTION DIAGRAM	230 / 460 V - 12 Lead Δ		
AREA CLASSIFICATION	Class I, Division 2, Groups A, B, C, D		
APPROXIMATE WEIGHT	366 lbs.		



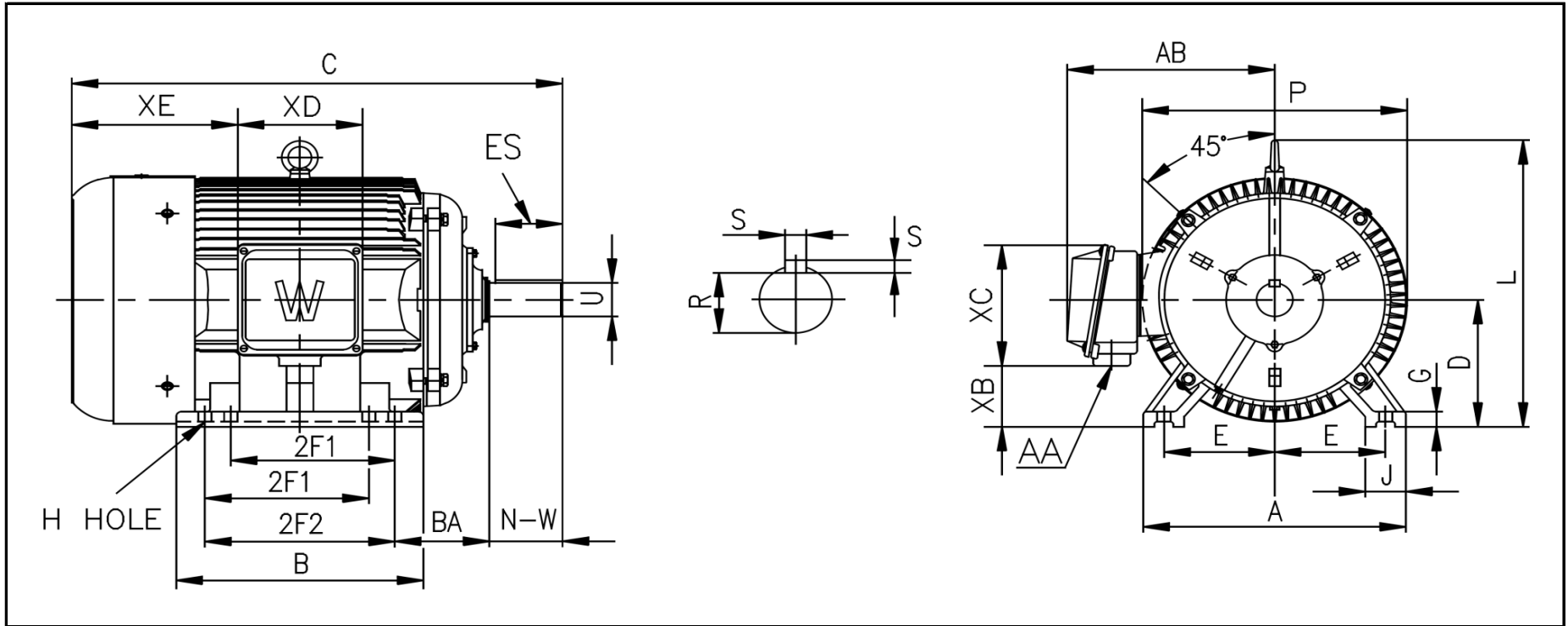
CC006A





WORLDWIDE ELECTRIC MOTOR DRAWING

PEWWE-284T



DIMENSIONS - INCHES

MOUNTING					A	B	C	D	G	J	P	L	AB
E	2F1	2F2	H	BA									
5.5	-	9.5	0.53	4.75	14	12.4	26.6	7	0.87	2.8	14	14.3	11.5

KEY		KEYSET	SHAFT		TERMINAL BOX				
S	ES	R	N-W	U	AA	XB	XC	XD	XE
0.5	3.28	1.591	4.62	1.875	1.5	3.6	7.4	6.3	9.25

PERFORMANCE CURVES

WorldWide Electric Corporation

1 (800) 808-2131

Worldwideelectric.net

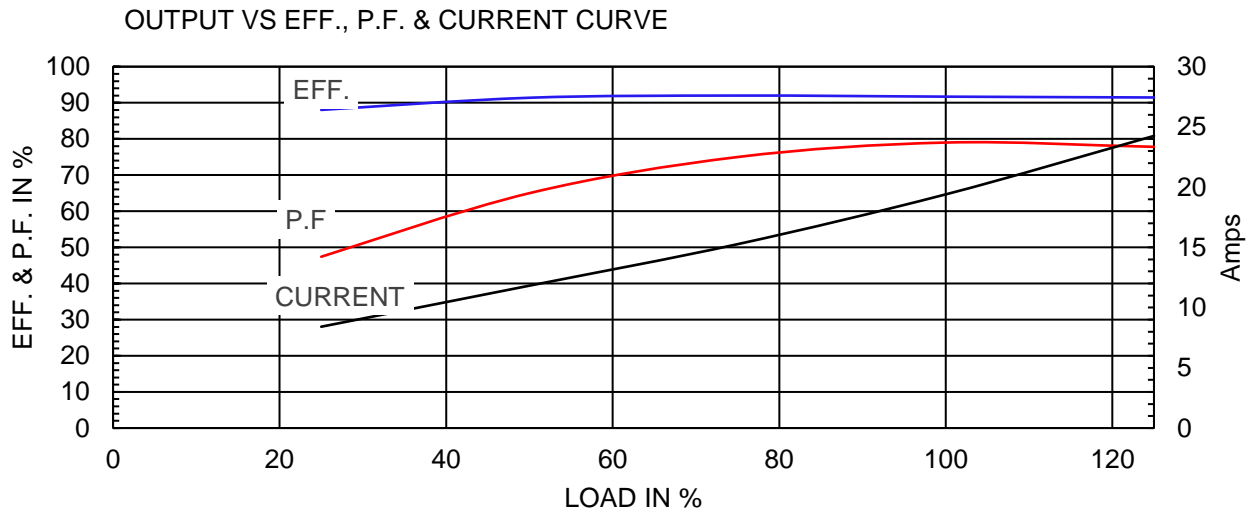
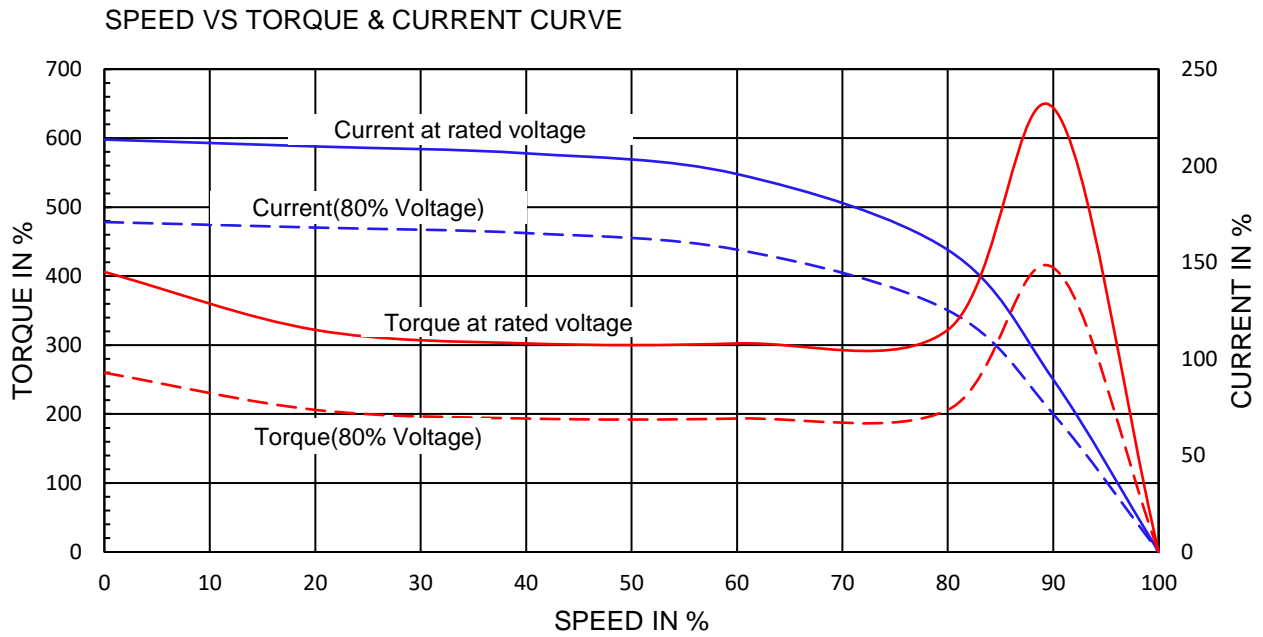


Premium Efficiency Motor:

PEWWE15-12-284T

Document Generated: 25-Jun-2020	Customer:
Document ID:	

Motor Type	PEWWE		FL Speed	1185		
Output Rating (HP)	15		LRT (%FLT)	145	460 volt FLA	19.4
Full Load Torque	66.5	lb.ft	BDT (%FLT)	230	230 volt FLA	38.8A
Rotor Wk^2	3.61	lb-ft^2				



NAMEPLATE / WIRING

WorldWide Electric Corporation

1 (800) 808-2131

Worldwideelectric.net



Premium Efficiency Motor:

PEWWE15-12-284T

Document Generated: 21-Aug-2019
Document ID:

Customer:

SAMPLE NAMEPLATE DATA

		PREMIUM EFFICIENCY 3-PHASE INDUCTION MOTOR				CC006A ISO9001	259277
Model	PEWWE15-12-284T		Ser No.		ZP		
HP	15	S.F.	1.25	Type	Encl TEFC IP55		
Frame	284T	P.F.	0.82	Ins Cl	Rating 40°C Amb Cont		
Voltage	230/460	Hz	60 Hz	Design	DE Brng 6311 C3		
Amps	38.8A / 19.4A	RPM	1185	Code	ODE Brng 6309 C3		
Nom.Eff.	FL 91.7%	3/4	92.0%	230/460V		Date	
Usable on 208V network at 41 Amps 1.0SF		Class I DIV. 2 Groups A B C D		Amb.40°C		T3C(160°C)	
10:1 CT 20:1 VT PWM VFD 1.0SF		Class I Zone 2 IIC		Amb.55°C		T3A(180°C)	
50Hz 15 HP 200/400 V V 46. / 23.1 A 980 rpm S.F1.0							
WorldWide Electric Corporation							

