



WORLDWIDE ELECTRIC MOTOR DATA SHEET

PEWWE150-18-445T



HORSEPOWER	150		
RPM / POLES	1800 / 4		
VOLTAGE / PHASE	230 / 460 V / 3		
FRAME	445T		
ENCLOSURE / DEGREE OF PROTECTION	TEFC / IP55		
FREQUENCY	60 HZ Suitable For 50 HZ Operation With 1.0 SF		
FULL LOAD SPEED	1790 RPM		
SERVICE FACTOR	1.25		
INSULATION CLASS	F		
FULL LOAD AMPS; 230 / 460	349 / 175 A (Usable On 208V At 386 A)		
LOCKED ROTOR AMPS (STARTING); 230 / 460	2170 / 1085 A		
NO LOAD CURRENT	116 / 58 A		
NEMA CODE LETTER	G		
EFFICIENCY / POWER FACTOR	<u>LOAD</u>	<u>EFF.</u>	<u>P.F.</u>
	100 %	95.8%	0.84
	75 %	96.1%	0.81
	50 %	95.9%	0.73
DUTY CYCLE	S1 / Continuous		
TORQUE	<u>FULL LOAD</u>	<u>LRT</u>	<u>BDT</u>
	440 lb.ft.	160%	240%
SLIP	0.55 %		
NEMA DESIGN	B		
MOMENT OF INERTIA	45.9 lb.ft.²		
MAX. TIME LOCKED ROTOR (Hot)	19 Seconds		
SOUND PRESSURE LEVEL	77 dB (A)		
MAX. AMBIENT TEMPERATURE	40° C		
MAX. ELEVATION	3300 Ft.		
TEMPERATURE RISE (At Full Load)	80° C		
DE BEARING	NU318 C3		
ODE BEARING	6313 C3		
REGREASING INT. - DE BEARING	1500 Hours		
REGREASING INT. - ODE BEARING	3000 Hours		
GREASE TYPE	SKF LGHP 2		
MOUNTING	F1 (F2 Suitable)		
ROTATION	Bi-Directional		
SHAFT MATERIAL	1045 Carbon Steel		
INVERTER RATING	10:1 CT / 20:1 VT PWM Type		
CONNECTION DIAGRAM	230 / 460 V - 12 Lead Δ		
AREA CLASSIFICATION	Class I, Division 2, Groups A, B, C, D		
APPROXIMATE WEIGHT	1570 lbs.		



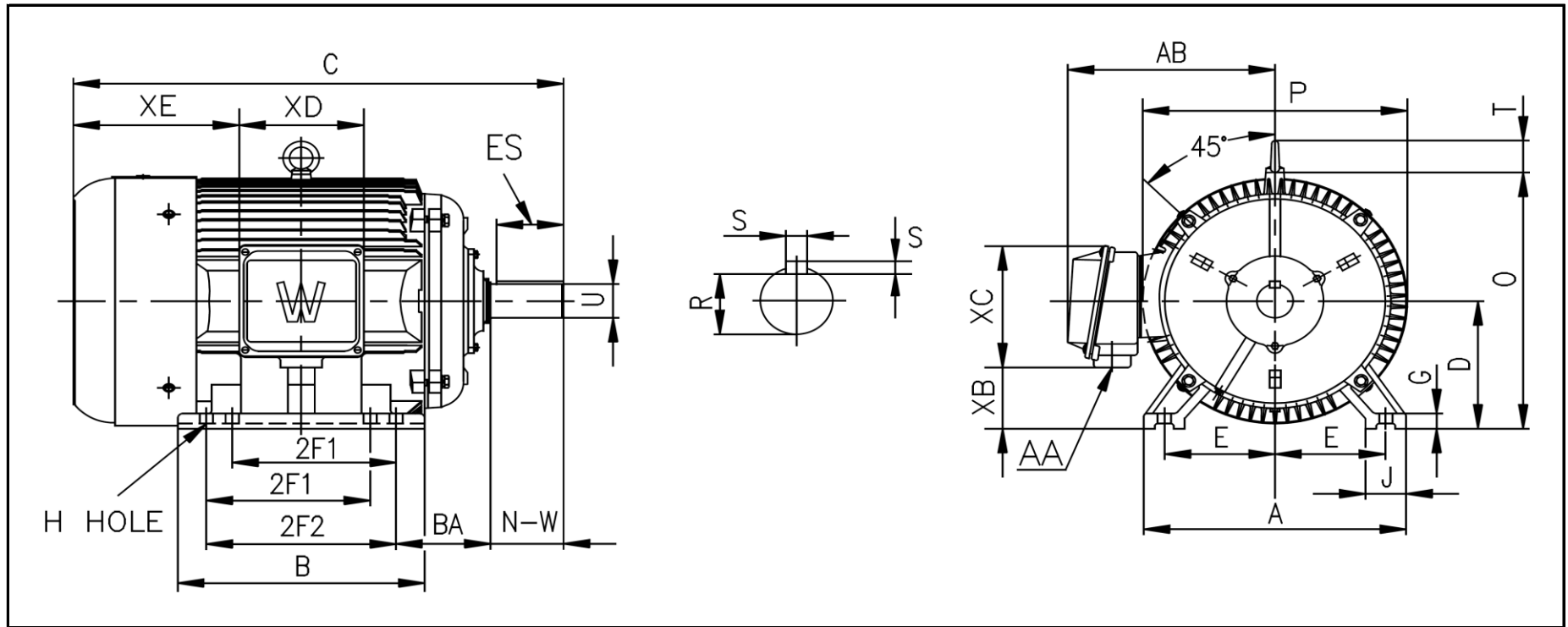
CC006A





WORLDWIDE ELECTRIC MOTOR DRAWING

PEWWE-445T



DIMENSIONS - INCHES

MOUNTING					A	B	C	D	G	J	P	O	T	AB
E	2F1	2F2	H	BA										
9	14.5	16.5	0.81	7.5	22	20.5	44.5	11	1.38	3.35	23.43	22.97	3.46	19.41

KEY		KEYSET	SHAFT		TERMINAL BOX				
S	ES	R	N-W	U	AA	XB	XC	XD	XE
0.875	6.91	2.88	8.5	3.375	2 x 3	5.67	11.73	11.34	14.37

PERFORMANCE CURVES

WorldWide Electric Corporation

1 (800) 808-2131

Worldwideelectric.net

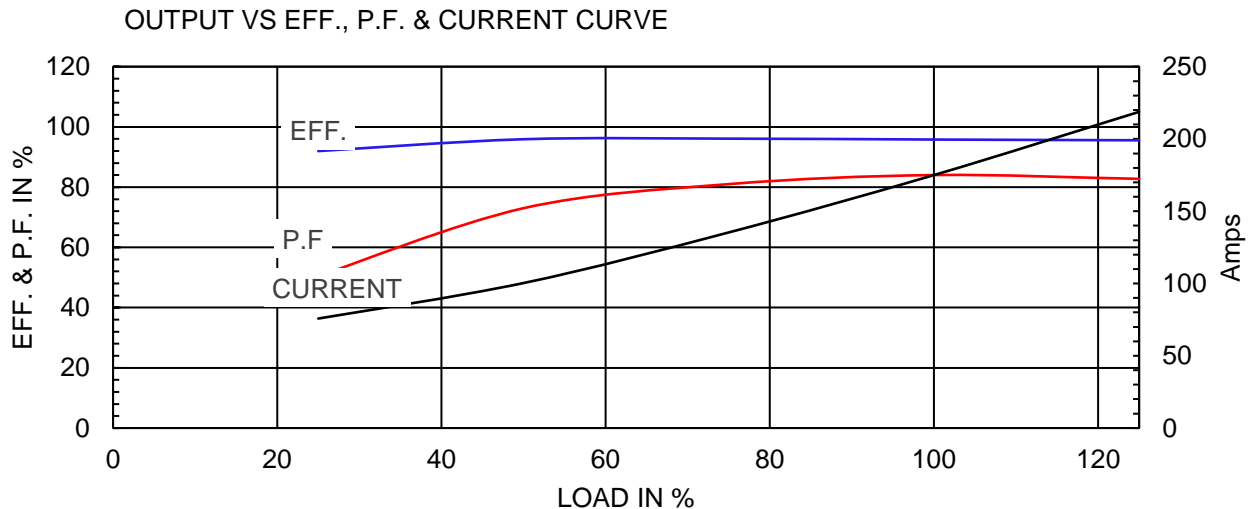
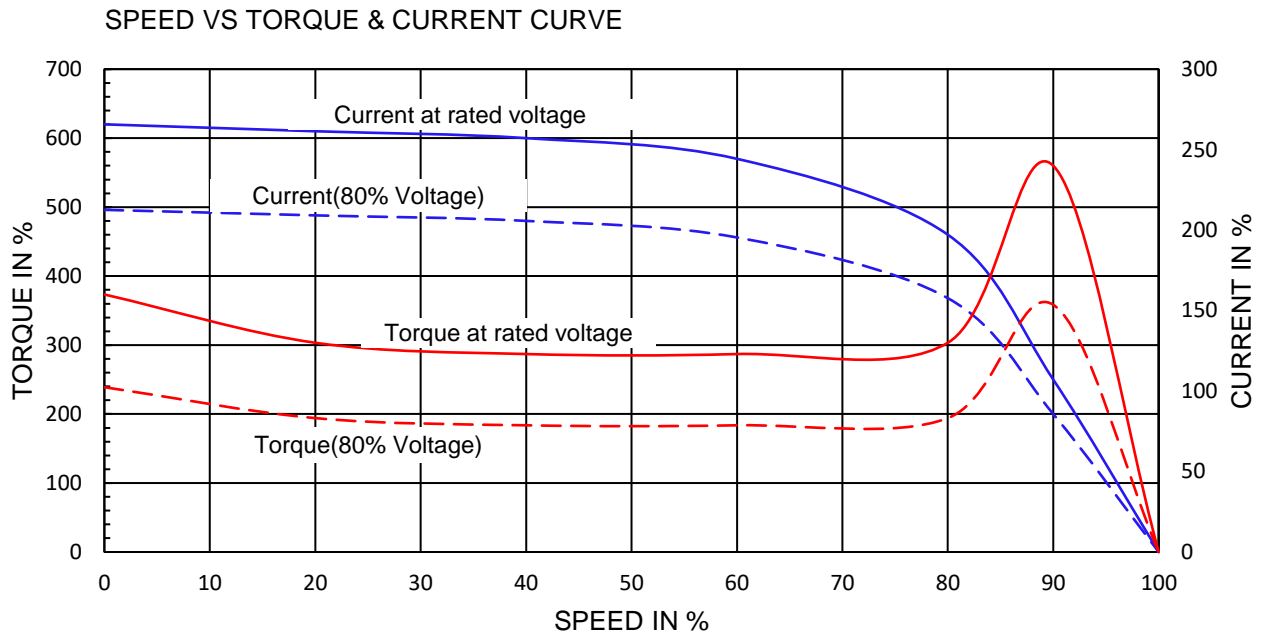


Premium Efficiency Motor:

PEWWE150-18-445T

Document Generated: 25-Jun-2020	Customer:
Document ID:	

Motor Type	PEWWE		FL Speed	1790	
Output Rating (HP)	150		LRT (%FLT)	160	
Full Load Torque	440 lb.ft		460 volt FLA	175	
Rotor Wk ²	45.9 lb-ft ²		230 volt FLA	349A	
			BDT (%FLT)	240	



NAMEPLATE / WIRING

WorldWide Electric Corporation

1 (800) 808-2131

Worldwideelectric.net



Premium Efficiency Motor:

PEWWE150-18-445T

Document Generated: 21-Aug-2019
Document ID:

Customer:

SAMPLE NAMEPLATE DATA

		PREMIUM EFFICIENCY 3-PHASE INDUCTION MOTOR				259277 CC006A ISO9001	
Model	PEWWE150-18-445T			Ser No.	ZP		
HP	150	S.F.	1.25	Type		Encl	TEFC IP55
Frame	445T	P.F.	0.85	Ins Cl	F	Rating	40°C Amb Cont
Voltage	230/460	Hz	60 Hz	Design	B	DE Brng	NU318 C3
Amps	349A / 175A	RPM	1790	Code	G	ODE Brng	6313 C3
Nom.Eff.	FL 95.8 %	3/4	96.1 %	230/460V		Date	
Usable on 208V network at 381 Amps 1.0SF				Class I DIV. 2 Groups A B C D		Amb.40°C	T3A(180°C)
10:1 CT 20:1 VT PWM VFD 1.0SF				Class I Zone 2 IIC		Amb.55°C	T3(200°C)
50Hz 150 HP 200/400 V V 407 / 203 A 1490 rpm 1.0SF							
WorldWide Electric Corporation							

Low Voltage

6	4	5
7	8	9
12	10	11
1	2	3
L1	L2	L3

High Voltage

4	5	6
7	8	9
12	10	11
1	2	3
L1	L2	L3

