



WORLDWIDE ELECTRIC MOTOR DATA SHEET

PEWWE2-18-145T



HORSEPOWER	2		
RPM / POLES	1800 / 4		
VOLTAGE / PHASE	230 / 460 V / 3		
FRAME	145T		
ENCLOSURE / DEGREE OF PROTECTION	TEFC / IP55		
FREQUENCY	60 HZ Suitable For 50 HZ Operation With 1.0 SF		
FULL LOAD SPEED	1755 RPM		
SERVICE FACTOR	1.25		
INSULATION CLASS	F		
FULL LOAD AMPS; 230 / 460	5.93 / 2.97 A (Usable On 208V At 6.56 A)		
LOCKED ROTOR AMPS (STARTING); 230 / 460	50 / 25 A		
NO LOAD CURRENT	3.9 / 1.95 A		
NEMA CODE LETTER	L		
EFFICIENCY / POWER FACTOR	<u>LOAD</u>	<u>EFF.</u>	<u>P.F.</u>
	100 %	86.5%	0.73
	75 %	86.4%	0.64
DUTY CYCLE	50 %	83.8%	0.51
	S1 / Continuous		
TORQUE	<u>FULL LOAD</u>	<u>LRT</u>	<u>BDT</u>
	5.98 lb.ft.	270%	350%
SLIP	2.5 %		
NEMA DESIGN	B		
MOMENT OF INERTIA	0.105 lb.ft. ²		
MAX. TIME LOCKED ROTOR (Hot)	5 Seconds		
SOUND PRESSURE LEVEL	62 dB (A)		
MAX. AMBIENT TEMPERATURE	40° C		
MAX. ELEVATION	3300 Ft.		
TEMPERATURE RISE (At Full Load)	80° C		
DE BEARING	6205ZZ C3		
ODE BEARING	6205ZZ C3		
REGREASING INT. - DE BEARING	---		
REGREASING INT. - ODE BEARING	---		
GREASE TYPE	SKF LGHP 2		
MOUNTING	F1 (F2 Suitable)		
ROTATION	Bi-Directional		
SHAFT MATERIAL	1045 Carbon Steel		
INVERTER RATING	10:1 CT / 20:1 VT PWM Type		
CONNECTION DIAGRAM	230 / 460 V - 9 Lead Y		
AREA CLASSIFICATION	Class I, Division 2, Groups A, B, C, D		
APPROXIMATE WEIGHT	58.5 lbs		



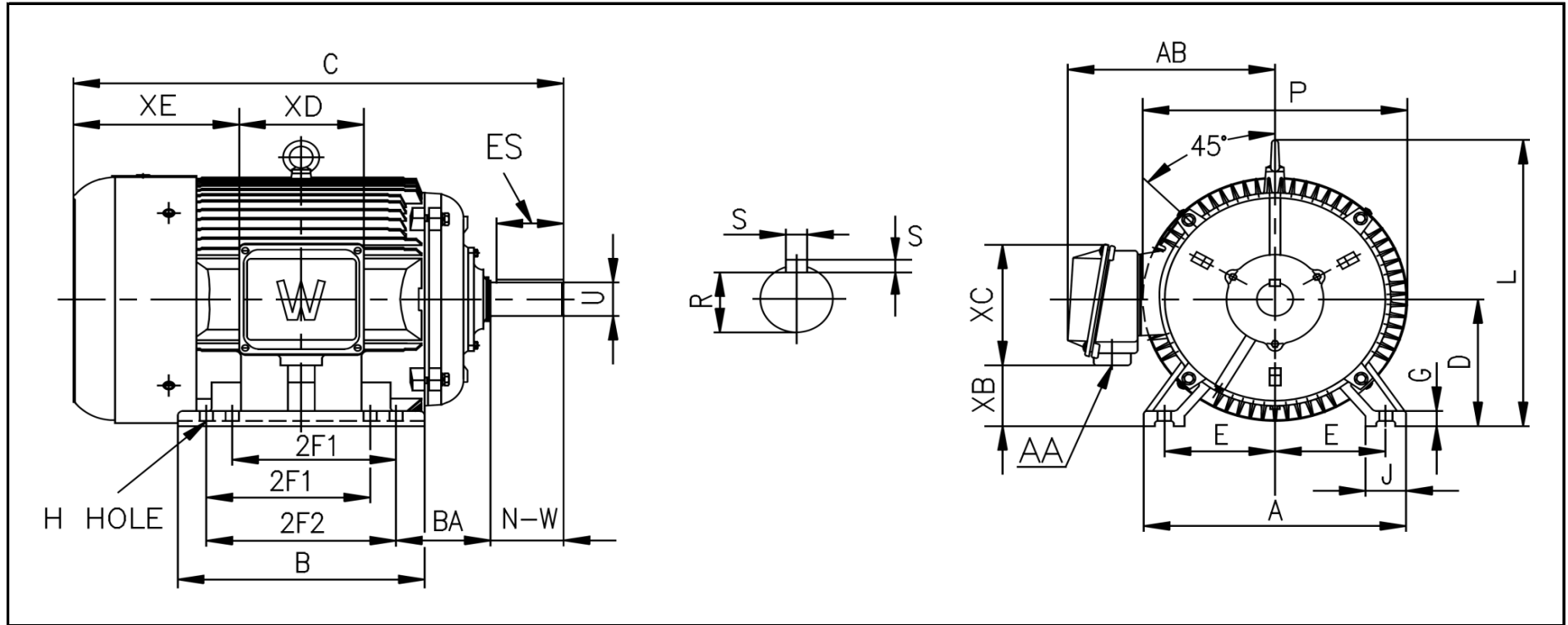
CC006A





WORLDWIDE ELECTRIC MOTOR DRAWING

PEWWE-145T



DIMENSIONS - INCHES

MOUNTING					A	B	C	D	G	J	P	L	AB
E	2F1	2F2	H	BA									
2.75	4	5	0.34	2.25	7	6.6	13.5	3.5	0.43	1	7.8	7.6	6.7

KEY		KEYSET	SHAFT		TERMINAL BOX				
S	ES	R	N-W	U	AA	XB	XC	XD	XE
0.188	1.41	0.771	2.25	0.875	0.75	1.6	4.6	4.1	4.45

PERFORMANCE CURVES

WorldWide Electric Corporation

1 (800) 808-2131

Worldwideelectric.net

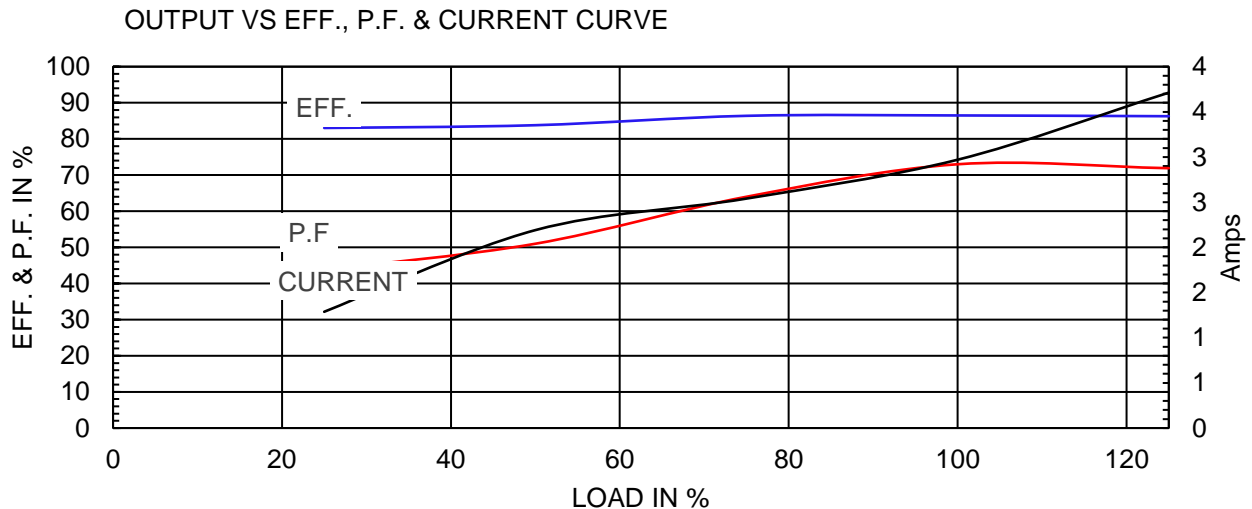
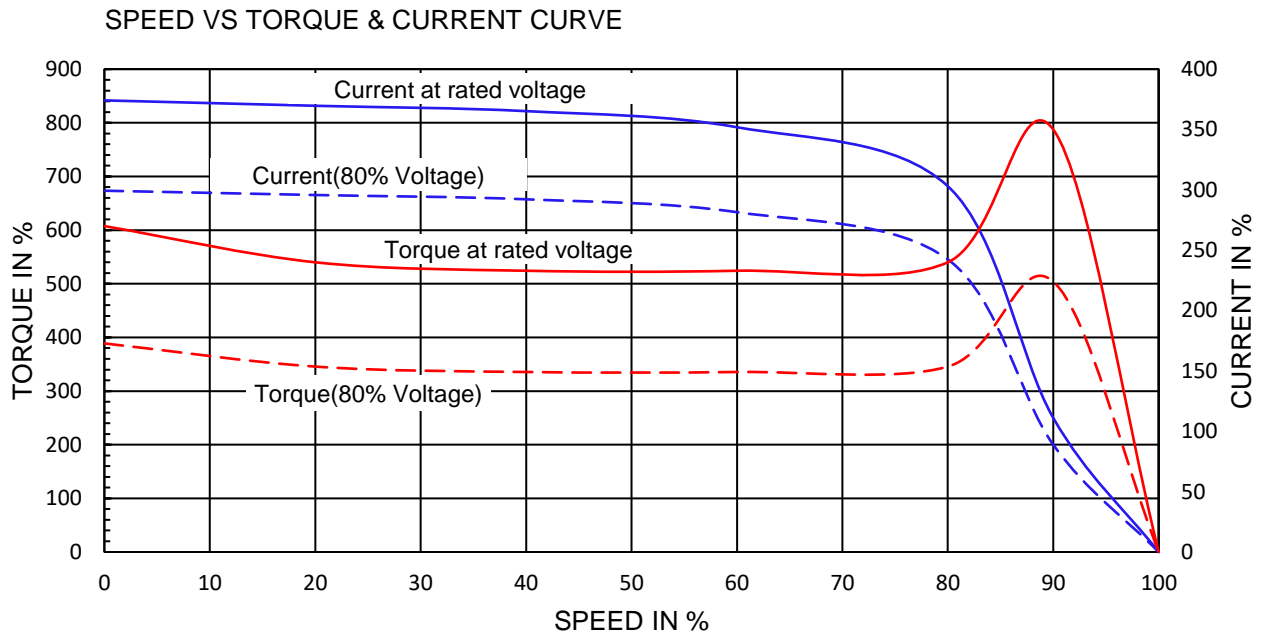


Premium Efficiency Motor:

PEWWE2-18-145T

Document Generated: 25-Jun-2020	Customer:
Document ID:	

Motor Type	PEWWE		FL Speed	1755	
Output Rating (HP)	2		LRT (%FLT)	270	460 volt FLA 2.97
Full Load Torque	5.98 lb.ft		BDT (%FLT)	350	230 volt FLA 5.93A
Rotor Wk^2	0.105 lb-ft^2				



NAMEPLATE / WIRING

WorldWide Electric Corporation

1 (800) 808-2131

Worldwideelectric.net



Premium Efficiency Motor:

PEWWE2-18-145T

Document Generated: 21-Aug-2019
Document ID:

Customer:

SAMPLE NAMEPLATE DATA

		PREMIUM EFFICIENCY 3-PHASE INDUCTION MOTOR		CC006A ISO9001	259277
Model	PEWWE2-18-145T	Ser No.	ZP		
HP	2	S.F.	1.25	Type	Encl TEFC IP55
Frame	145T	P.F.	0.74	Ins Cl	F
Voltage	230/460	Hz	60 Hz	Design	B
Amps	5.93A / 2.97A	RPM	1755	Code	L
Nom. Eff.	FL 86.5 %	3/4 86.4 %	230/460V		Date
Usable on 208V network at 6 Amps 1.0SF		Class I DIV. 2 Groups A B C D		Amb.40°C	T3C(160°C)
10:1 CT 20:1 VT PWM VFD 1.0SF		Class I Zone 2 IIC		Amb.55°C	T3A(180°C)
50Hz 2 HP 200/400 V 7.13 / 3.56 A 1450 rpm S.F1.0					

Low Voltage

High Voltage

